



ALAMANCE
COMMUNITY COLLEGE



**President's & Foundation
Annual Report 2024-2025**



VISION

Transforming lives through excellence in teaching, learning, and service.



MISSION

Alamance Community College provides educational programs and services to prepare all members of our diverse community to succeed.



VALUES

Excellence

We hold ourselves to the highest expectations and are committed to meeting them with integrity.

Learning

We provide high-quality educational experiences that help people gain the knowledge, skills, behaviors, and values necessary to achieve their goals.

Community

We promote collaboration and partnerships through respectful interactions.

Equity and Inclusion

We embrace the diversity of our communities, work to ensure that each person feels a sense of belonging, and provide access to the resources people need to succeed.

Innovation

We are open to change, creativity, and risk-taking that help us achieve our mission and goals.

TABLE OF CONTENTS

- 3** Message from the President
- 4** From the Board of Trustees Chair
- 5** From the Foundation Board Chair
- 6** New Places & Spaces
- 8** Institutional Highlights
- 14** Employee Success
- 17** Student Engagement
- 20** Graduations
- 24** Foundation by the Numbers
- 26** Gifts with Impact
- 30** Made in Memory
- 32** Made in Honor
- 34** Endowed Funds
- 36** Scholarships
- 37** Year in Review



Message from the
President

Welcome to the 2024-25 Annual Report for Alamance Community College. This past year, we have built on a foundation of strong purpose, collaboration, and innovation, and I'm proud of what we've achieved together.

At ACC, we believe that education is more than credentials, it is transformation. Our students, faculty, staff, and community partners continue to make this belief real. Over the last year, we focused on three strategic pillars: strengthening our student experience, aligning our programs with workforce needs, and deepening our community partnerships. Each milestone you'll read about in this report contributes to those pillars.

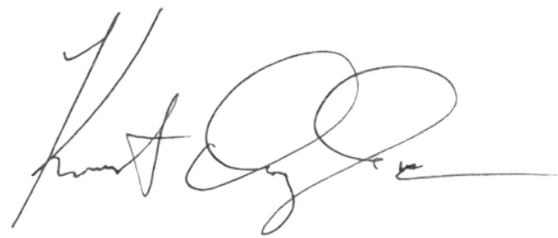
We revamped key academic pathways, refined our support structures to ensure students never walk alone, and expanded high-impact programs that connect classroom learning with real jobs. We also accelerated investments in equipment and facilities, not as ends in themselves, but as tools to enhance teaching, upskill our community, and drive regional prosperity.

None of this happens in isolation. I want to thank

our faculty for their creativity and care, our staff for their unwavering commitment, our trustees for their vision, and our business and industry partners for trusting us to prepare the workforce of tomorrow. Most importantly, thank you to our students, you are the reason we wake up each morning striving to do better.

As you explore this report, I invite you to reflect not just on the numbers and the outcomes, but on the enduring promise of ACC: to open doors, ignite ambition, and change lives. The pages ahead reveal our story of growth and purpose, but the best part is what lies ahead.

Together, we are shaping a brighter future for our students, our region, and our college.




Dr. Ken Ingle
Alamance Community College President

Enrollment Report



CURRICULUM

Unduplicated Headcount

2023-2024: 5,776  **6.9%**
2024-2025: 6,179

FTE

2023-2024  **7.9%**
to
2024-2025



CONTINUING EDUCATION

Unduplicated Headcount

2023-2024: 6,775  **18.4%**
2024-2025: 8,024

FTE

2023-2024  **8.7%**
to
2024-2025



From the Board Chair

As I reflect on the past year at Alamance Community College, I am filled with both gratitude and pride. Gratitude for the dedicated faculty and staff who live out our mission every single day, and pride in the progress our College continues to make as a cornerstone of opportunity for Alamance County and beyond.

Serving as Chair of the Board of Trustees, I have the privilege of seeing firsthand the heart and determination that drive this institution. Every decision made, every initiative launched, and every partnership formed is rooted in a single goal: to create a place where students can see their potential and believe in what's possible for their future.

This past year has been one of growth, resilience, and transformation. Under Dr. Ingle's leadership, ACC continues to reimagine what community college education can be: responsive, innovative, and impactful. Whether it's through expanding workforce programs, strengthening academic pathways, or creating an environment where students feel supported and empowered to succeed, the College is fulfilling its promise to meet the needs of both today and tomorrow.

Our trustees are honored to serve alongside a team that understands that education is not just about degrees, it's about people. It's about changing lives, lifting families, and strengthening our community. The pages ahead celebrate that mission in action.

On behalf of the Board of Trustees, thank you for believing in ACC. Together, we are shaping a brighter, stronger, and more hopeful future for all who call this community home.

A handwritten signature in cursive script that reads "Julie S. Emmons".

Ms. Julie Scott Emmons

Chair, Board of Trustees

BOARD OF TRUSTEES

Mrs. Julie Scott Emmons, Chair

Mr. Ken Walker, Vice-Chair

Mr. Walter Britt

Mr. Grant Brooks

Mr. James Butler

Mr. Steve Carter

Dr. Roslyn Crisp

Mr. Powell Glidewell, III

Mr. William Gomory

Ms. Tammy Karnes

Ms. Sylvia Muñoz



From the Foundation Board President

Dear supporters and friends,

As conclude my term as President of the ACC Foundation Board, I want to express my sincere gratitude for your support. Together, we have assisted more than 1,000 students annually and launched new programs that make learning and student support stronger. Your time, generosity, and encouragement have made a real difference for our college and community.

It has been a privilege to work alongside such dedicated board members, staff, students, volunteers, and donors who truly represent the spirit of Alamance Community College. Your commitment has been instrumental to our success.

This year, we continued advancing ACC's vision to be a catalyst for workforce development, economic mobility, and opportunity in our community. From helping students overcome financial barriers to supporting programs that prepare future nurses, educators, advanced manufacturers, and technology professionals, your generosity has fueled progress for ACC and for our region. We supported the launch of the new Public Safety Training Center and expanded our program offerings with new pathways in Veterinary Medical Technician, Artificial Intelligence, and Data Analytics. These strategic investments helped drive enrollment to surge by more than 8% this fall and an increase of 40% in awarded ACCF scholarship dollars, demonstrating the strong demand for the relevant, career-focused education ACC provides.

As I pass leadership to Jack Overacre, I am confident in the Foundation's future. Your continued support will help us to address evolving needs and ensure every student has the resources to succeed.

Thank you for your trust, partnership, and support. We have built a strong foundation for the future, and I look forward to seeing what we accomplish together.

Jackie S. Cole

President, ACC Foundation Board

BOARD OF Directors

Jackie Cole, President

Jack Overacre, Jr.

Vice President

Charlie R. Harris, Treasurer

Charlene Barrett, Secretary

Ami Hill, Immediate Past

President

BOARD Members

Tracey Alston

Jerry Bailey

John Bellingham

Charles Canaday, Jr.

Ted Chandler

Sara Cloud

J. Ray Deal

Susan Ezekiel

Yazmin Garcia Rico

Doug Hargrove

Brad Harmon

Kelli Harrell

Brent Hampton

Tom Humphrey

Dr. G. Wallace Kernodle, Jr.

Elizabeth Kirkpatrick

James Kirkpatrick

Ashley Lane

Brendle Leggett

Jesse Long

Christine Mathews

Dr. W. Terry McNeill

David Moore

Grover Moore

Lisa Thaller

Don Von Hagen

Troy Woodard, Jr.



New Places & *Spaces*

Public Safety Training Center Ribbon Cutting

Alamance Community College proudly celebrated a landmark moment on September 25, 2025, with the ribbon-cutting of its new Public Safety Training Center. This facility marks a major investment in the College's commitment to workforce development and community safety, bringing together local leaders, elected officials, and business partners to honor a new chapter in public service education.

The training center features a 15,000-square-foot classroom building equipped with the latest instructional technology and flexible learning spaces. Adjacent to the main building, a 14,000-square-foot indoor firing range provides safe, controlled training year-round. A multi-story training tower enables realistic emergency simulations, and an emergency vehicle driving pad offers essential preparation in high pressure driving scenarios for first-responders.

“This Training Center is more than a building, it’s a promise. It’s a promise that ACC will continue to support the men and women who dedicate their lives to protecting and serving our community.”

-Dr. Ken Ingle, ACC President

This facility is not only for ACC's students, who will gain hands-on training in law enforcement, fire, and emergency services, but also serves as a partnership hub for local agencies seeking professional development and scenario-based training. By aligning our programs with real-world needs, ACC is strengthening the entire region's public-safety workforce and enhancing the quality of service to the citizens of Alamance County.

As ACC continues to grow as a cornerstone of workforce readiness and regional development, the new Public Safety Training Center stands as a powerful symbol of what can be accomplished through shared purpose, innovation, and investment in people. Students, first-responders, and community agencies alike will benefit from this facility for years to come.

Dedication of the Dr. Algie Gatewood Atrium

ACC proudly dedicated the Dr. Algie Gatewood Atrium, honoring President Emeritus Dr. Algie Gatewood for his lasting impact on the College. During a heartfelt ceremony, faculty, staff, and community members celebrated Dr. Gatewood's legacy of service, transformation, and unwavering commitment to students, qualities that continue to shape ACC's mission and future. The newly named Atrium stands as a symbol of his dedication and the countless lives changed through his leadership.



Upfitting the Third Floor of the Biotechnology Center of Excellence

Alamance Community College is taking another bold step toward preparing students for the jobs of tomorrow with the upfit of the third floor of the Biotechnology Center of Excellence. This new space will serve as the dedicated home for the College's Artificial Intelligence and Business Data Analytics programs, fields that represent some of the fastest-growing career opportunities in North Carolina and across the nation.



Construction will begin in early 2026 to transform the 7,139-square-foot third floor of the Biotechnology Center of Excellence, creating a dedicated home for ACC's growing AI and Business Data Analytics programs. This space will be complete with six classrooms, a new lab space, a server room, and instructional areas purpose-built for data analytics and artificial intelligence instruction.

By housing these programs within the Biotechnology Center of Excellence, ACC is reinforcing its commitment to innovation, workforce readiness, and industry alignment. This upfit not only strengthens the College's capacity to train students for high-demand, technology-driven careers but also positions ACC as a regional leader in the convergence of biotechnology, data, and artificial intelligence.



Institutional *Highlights*

ACC Joins Statewide BOOST Initiative

As part of the first cohort of the statewide Boost program, ACC quickly demonstrated its capacity to connect students with fast-track pathways to high-demand, high-wage careers. The program offers wraparound support such as dedicated advising, financial resources of up to \$600 per year for textbooks, up to \$800 per year in \$100 monthly stipends, and structured pathways aligned with workforce needs that help students stay on track.

ACC's initial goal of enrolling 150 students in the first Boost cohort was achieved in under four months with all 150 seats filled. This rapid response reflects the strong demand among students for accelerated pathways and demonstrates ACC's ability to implement innovative programs that meet our region's workforce challenges head-on.

While the Boost model is rooted in a nationally proven framework, ACC's implementation tailors it to our local needs, supporting students in fields aligned with our strategic priorities and connecting them with employers ready to hire. Students in Boost receive personalized guidance, frequent check-ins, and targeted resources to remove barriers, helping them remain engaged, persist, and complete their programs more quickly.

Just as important, Boost is intentional about building community, connecting students with ACC faculty, staff, and peers to foster belonging and ensure they know exactly where to turn for help.

The success of this first cohort positions ACC to further expand access and deliver even greater impact. By joining Boost in its early phase, ACC underscores its role as a leader in workforce development, committed to transforming lives and powering regional economic growth through strategic education investments.



2024 Community Partner of the Year

ACC was honored as the 2024 Community Partner of the Year by the Alamance Chamber during its annual meeting on January 28. The award recognizes ACC's leadership in education, workforce development, and community collaboration.

ACC was recognized for its role in recruiting industry, growing jobs, and supporting entrepreneurs, as well as expanding programs to meet local workforce demands. In 2024, the College launched a pilot program with the Fiber Broadband Association's OpTIC Path certification to help local employers build a skilled broadband workforce.

Cybersecurity Program Achieves National Recognition

The cybersecurity associate degree program at ACC has earned a prestigious national distinction, ranking #2 in the nation in the 2026 Cybersecurity Guide rankings of top associate programs. This honor places ACC among an elite group of institutions preparing students to defend our digital world.

Selection for the ranking was based on rigorous criteria: offering a recognized associate program in cybersecurity, maintaining strong admission, retention, and graduation rates, being designated a Center for Academic Excellence in Cybersecurity,

and keeping tuition accessible. ACC not only met these standards but exceeded expectations, demonstrating its commitment to quality education and student outcomes.

“Being ranked #2 in the nation affirms that ACC is delivering the real-world skills employers need to defend today’s digital infrastructure.”

- Debra McCusker, Department Head of AI and I.T

As the demand for cybersecurity professionals continues to grow, ACC's program ensures students are ready to step into high-impact roles as it strengthens the college's ability to meet industry needs and community expectations.

Marketing Department Earns National Award



ACC's Marketing Department earned national recognition with a Bronze Paragon Award from the National Council for Marketing & Public Relations (NCMPR) in the Interior Signage Displays category. The award was presented at NCMPR's Conference in New Orleans.

The winning project highlighted ACC's refreshed brand identity through bold and engaging campus signage that reflects the College's mission to inspire, connect, and serve its community.

Sandvik Named Business Partner of the Year



For more than 40 years, Sandvik Coromant has been a vital partner in ACC’s mission to strengthen workforce pipelines and expand opportunity in Alamance County, earning recognition in 2024 as ACC’s Business Partner of the Year. With nearly \$300,000 invested in the College, including support for the Computer Integrated Machining program, equipment donations such as 70 student laptops, and close collaboration with Corporate Education to expand youth and adult apprenticeship pathways, Sandvik has created meaningful hands-on learning and employment opportunities for ACC students. The company further demonstrated its commitment by hosting its first “Girls Take Over Tech” event in 2024 to

encourage young women to pursue careers in advanced manufacturing. From the classroom to the production floor, Sandvik continues to open life-changing pathways for students while helping local industry secure the skilled talent it needs to grow.

ACC Expands Educational Access

In 2024, ACC celebrated a powerful milestone, awarding its 17th high school equivalency diploma to an inmate at the Alamance County Detention Center. Since launching in 2014, ACC’s College and Career Readiness Department has partnered with the Alamance County Sheriff’s Office to offer educational opportunities to incarcerated individuals, helping them build stronger futures through learning. The most recent graduate, Jorge Morgado, earned his High School Equivalency (GED) while incarcerated, supported by ACC instructor Bennett Yancey.



The program’s success is made possible through collaboration among ACC, the Alamance County Detention Center, the Sheriff’s Office, and the United Way of Alamance County, which provides scholarships covering GED testing costs.

55% reduction of inmate recidivism by taking just one educational class.

Parent Promise Opens Doors for Families

In 2024, ACC launched Parent Promise, an innovative program that extends educational opportunities to parents and guardians of students enrolled in the College’s Career & College Promise program. Through this initiative, eligible parents can take one free class per semester, valued up



Cecilia Holden, President & CEO of myFutureNC

to \$500, and receive an additional \$250 credit toward books and supplies. Participants may choose from both curriculum and workforce development courses, offering flexible options for personal enrichment, career advancement, and lifelong learning.

“The Parent Promise Scholarship was born out of a need I saw right here in our community—parents who were working hard to build a better life but couldn’t afford to take the next step. As of November 1, 2025, we’ve received 61 submissions, which tells me this program is meeting a real need. It’s about giving parents the opportunity to invest in their future while continuing to provide for their families.”

-Dr. Ken Ingle, ACC President

With generous support from the ACC Foundation, Parent Promise has created a meaningful pathway for parents to pursue their educational goals while also inspiring future generations.

\$100,000 Grant to Enhance Student Support Services



ACC received a \$100,000 grant through the efforts of Senator Amy Scott Galey, Representative Stephen Ross, and Representative Dennis Riddell, marking a major advancement for the Dillingham Campus. The funding will support creation of a comprehensive one-stop student support center, designed to make essential services more accessible.

The new space will house the food pantry, financial aid assistance, technical and distance learning support, mentoring, advising and registration, mental health resources, and library and tutoring services, all under one roof.

ACC President Dr. Ken Ingle expressed gratitude to the legislators for their dedication to education and student success, noting that the project aligns with ACC’s mission to remove barriers and foster community enrichment.

This grant represents a significant step forward in our commitment to supporting every student’s journey toward success.

**- Dr. Justin Snyder
Senior Vice President, Student Learning & Workforce Development**

Building a Stronger Workforce

When local manufacturers and employers look to the future, they're turning to one place to build it: Alamance Community College.

This year, ACC's Corporate Education experienced remarkable growth, driven by one shared mission: to equip local talent with the skills needed to thrive in today's rapidly evolving economy. From automation and leadership to communication and workplace safety, ACC is strengthening companies from the inside out and helping individuals build meaningful careers.

Corporate Education

1,132 Unique Individuals Trained

131 Customized Training Classes

51 Employer Partners

11,718 Contact Hours Delivered

Workforce Development

164 College & Career Readiness Classes

455 Occupational Enrichment Classes

1,214 Public Safety Classes

24,377 Registrations

Our Learners Represent Ever

Ages 10-19

8.4%

Enrolled in Summer Camp Opportunities

Ages 20-29

18%

Launching Careers

Ages 30-39

21.9%

Stepping into new Opportunities

A Year Defined by Partnership

One of the year's defining achievements came in October, when ACC formalized major workforce partnerships with Carolina Biological Supply Company and Zimmermann-Dynayarn USA.

During the signing ceremony, surrounded by employees, and leadership teams, the message was clear: Investing in people today builds a stronger Alamance County tomorrow.

Carolina Biological will train more than 450 employees over the next several years with a focus on leadership, communication, and professional development. Their CEO emphasized that this partnership goes beyond technical skills, it's about growing people.

Zimmermann-Dynayarn, a global manufacturer establishing its U.S. footprint in Alamance County, chose ACC to train its team in lean processes, safety, automation, and advanced manufacturing. As they scale cutting-edge technology in the region, ACC will ensure the workforce scales alongside it.

These partnerships represent more than training contracts, they represent career pathways, economic opportunity, and a shared commitment to strengthening the fabric of our community.

ACC is proud to serve as the workforce engine fueling growth, innovation, and prosperity across Alamance County and beyond.



CAROLINA[®]

ZIMMERMANN
DYNAYARN USA

by Stage of the Career Journey

Ages 40-49

24.8%

Sharpening Skills for
Advancement

Ages 50-59

21.6%

Sharpening Skills for
Advancement

Ages 60-70+

11.8%

Continuing to Contribute
to Grow



Employee Success

ACC Faculty Selected for National Mentor Connect Program

Four Alamance Community College faculty and staff members have been selected to participate in the prestigious Mentor Connect Program, supporting development of a National Science Foundation Advanced Technological Education (NSF-ATE) grant proposal for October 2025.

The team, Michelle Sabaoun, Department Head of Biotechnology; Dr. David Battigelli, Biotechnology Instructor; Dr. Melanie Lewis, Dean of Public Health and Services; and Fred Keith, Grants Coordinator, will attend national workshops in New Orleans and Minneapolis as part of the program.

Their proposed project will establish short-term pre-apprenticeship certifications and expand coursework in biopharmaceutical quality, with a focus on analytical chemistry, biochemistry, and microbiology, culminating in a new Associate in Applied Science (AAS) degree.

With its strategic location between the Piedmont Triad and Research Triangle Park, ACC is well positioned to prepare students for high-demand biotechnology careers. The new curriculum will debut regionally before being shared with other North Carolina community colleges.

Celebration of Excellence

Each spring, the ACC Foundation gathers students, families, faculty, staff, and community supporters for the Celebration of Excellence, an event that honors outstanding students who excel academically, lead with purpose, and overcome significant challenges. Supported by scholarships funded through the ACC Foundation and generous donors, these students are empowered to pursue their goals, while faculty and staff are recognized for their exceptional dedication to student success. Together, the stories shared during the celebration serve as a reminder that when people believe in ACC students, lives are transformed and futures are reshaped.



Faculty Member of the Year, Jerry Hackney

Jerry Hackney is the Department Head of Agricultural Sciences. His leadership has secured several additional funding sources to enhance the Bill and Nancy Covington Education Center, incorporating new technology and innovative farming practices that prepare students for the future of the industry.



Staff Member of the Year, Darsell Hadley

Darsell Hadley is the Administrative Assistant for ACC's Wellness and Student Support department. Her responsibilities include managing and serving as the key point of contact for student needs, ensuring they feel heard, supported, and feel valued. Hadley is known for being quick to offer a helping hand to her coworkers.



Adjunct Faculty Member of the Year, Travis Handy

Travis Handy is an adjunct instructor in ACC's Fire Protection program. He spent his career serving with the Burlington Fire Department for over 31 years, advancing to the rank of Chief of Operations and Training before his retirement in 2023. While still working full-time with the fire department, he started teaching in ACC's Fire Academy in 2010 before advancing into the curriculum program in 2012.



Workforce & Economic Development Instructor of the Year, Amy Morrison-Depue

Amy Morrison-Depue has worked at ACC as an instructor in the ABLE program since 2020. She has been described as an energetic and dramatic instructor who tries to provide lots of hands-on learning for her students. Through her work and her innovative Friday classes exploring art and science, she builds confidence, skills, and resilience in her students, empowering them to thrive.



Part-time Staff Member of the Year, Susan Turner

Susan brings a wealth of knowledge and heart to her advising work in ACC's Health Sciences programs, helping students navigate their academic journeys and prepare for careers in healthcare since 2022. Beyond ACC, Susan is a role model in our community, serving as the head coach for the Elon Cheer Team. She has a Bachelor of Arts degree in Human Services from Elon University, and holds a Graduate Level Certification in Vocational Evaluation from East Carolina University.



Student *Engagement*

Areli Velazco Lopez, a Biotechnology student at Alamance Community College, has been selected to participate in the competitive NIIMBL eXperience, a national, week-long immersion program that introduces students to careers in the biopharmaceutical industry.

Held in Puerto Rico and sponsored by the National Institute for Innovation in Manufacturing Biopharmaceuticals, the program offers hands-on learning, networking with industry professionals, and all travel and expenses covered.

A graduate of Cummings High School and former Career and College Promise student, Areli discovered her passion for biotechnology while dual-enrolled at ACC. Now studying in the Biotechnology Center of Excellence, she continues to develop advanced laboratory skills using industry-standard equipment.

After completing her associate degree in Biotechnology this summer, Areli plans to pursue a bachelor's degree in biology at UNC Charlotte, UNC Wilmington, or UNC Greensboro, with aspirations of a career in clinical and experimental research.

“Areli is a motivated student who has honed her skills and shown exceptional persistence. We are proud of her acceptance into this prestigious program.”

- Michelle Sabaoun, Department Head of Biotechnology



ACC Leaders Honored at Statewide Student Government Conference

ACC earned top recognition at the N4CSGA Spring Conference, with two campus leaders receiving statewide honors for their outstanding service and leadership.

Katherine Hackney, Student Government Association Vice President, received the Robert W. Scott Leadership Award, recognizing exceptional student leadership and commitment to the North Carolina Community College System.

Gilbert Umberger, Coordinator of Student Life and Engagement, was named Advisor of the Year for his dedication to empowering students and fostering engagement across campus.

ACC's strong culture of leadership and student involvement reflect the College's commitment to supporting students both inside and outside the classroom.



Gilbert Umberger, Coordinator of Student Life and Engagement

ACC Leaders Honored at Statewide Student Government Conference

Students joined college administration and our Board of Trustees in Raleigh for Community College Day. It was an incredible experience visiting our legislature, connecting with leaders, and celebrating everything that makes the North Carolina Community Colleges so impactful.

From networking to advocating for the power of community college education, it was a day filled with learning, conversations, and ACC pride.



Graphic Design Students Win Awards

Ten students from Alamance Community College’s Graphic Design Department competed in the SkillsUSA NC State Leadership & Skills Conference in Greensboro, earning top honors for their creativity and talent.

Carmen Clippinger won 1st place in T-shirt Design, and Spencer Stewart took 1st place in Pin Design, both qualifying to represent North Carolina at the SkillsUSA National Leadership & Skills Conference in Atlanta this June. Their winning designs will be produced as the official artwork for the state delegation.



Carmen Clippinger, First place-winning T-shirt Design



Spencer Stewart First place in Pin Design

Additional winners included Makenzie Odle (3rd place, Pin Design), Gwendolyn Strong (4th place, T-shirt Design), Dakota Arehart (5th place, Advertising Design), and Taylor Lee (5th place, Pin Design).



ACC Celebrates 967 Graduates at 2025 Commencement

Alamance Community College conferred 967 degrees, diplomas, and certificates during its 2025 Commencement Ceremony held June 13 at Elon University. ACC President Dr. Ken Ingle presided over his second commencement, honoring students' achievements across academic and workforce programs.

The graduating class included 896 curriculum completers earning 642 associate degrees, 92 diplomas, and 408 certificates, as well as 71 students who earned GED or HiSET diplomas, including two from the Alamance County Detention Center.

Among the graduates were 181 high school students participating in the Career and College Promise dual-enrollment program, many of whom completed associate degrees and will transfer to four-year universities as juniors.



The ceremony featured keynote speaker Anderson Rathbun, President of Knuckleball Entertainment, who inspired graduates with messages of perseverance and community.



896

Curriculum Completers

642

Associate Degrees

92

Diplomas

408

Certificates



Basic Law Enforcement Graduation Achieves 100% Pass Rate

Alamance Community College proudly celebrated the graduation of its latest Basic Law Enforcement Training (BLET) class, marking another outstanding achievement for the program.

This cohort earned a 100% pass rate on both the state certification exam and the Peace Officer Physical Abilities Test (POPAT) assessment, reflecting their exceptional dedication, discipline, and commitment to public service.

ACC commends these graduates for their hard work and perseverance and proudly supports them as they begin their careers serving and protecting communities across North Carolina.

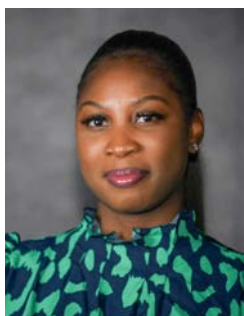


Student *Ambassadors*

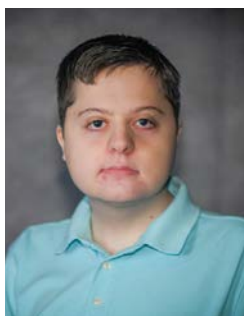
The 2024–2025 Student Ambassadors marked the 37th cohort of a program established in 1987, a program that has long served as a model for other community colleges. The Ambassadors are a group of exemplary students nominated by faculty and staff to represent the College by hosting campus activities, conducting tours, recruiting new students, assisting in advancement activities and speaking to community and civic groups.



Alaceya Doby
Associate Degree Nursing



Azavia Jones
Associate in Science
Pre-Nursing



Chase Foster
Associate in Science



Emily Orr
Biotechnology



Giselle Menjivar
Associate in Arts



Lily Sumner
Associate in Arts



Nicolle Ramirez
Associate in Engineering



Rebecca Smith
Dental Assisting



Samantha James
Information Technology:
Systems Security
(Cybersecurity)



Jerome Mushi
Associate in Arts

Student *Success*



Mary Rose Villagante

N.C. Community College System Academic Excellence Award Recipient for Alamance Community College

Mary Rose Villagante of Graham, NC is a Medical Laboratory Technology student and is pursuing an Associate in Science degree to help provide a stronger foundation for her three young children's future. Personal and unexpected circumstances prevented her from finishing a college degree until she found her most promising academic opportunity at ACC. Mary Rose says ACC's Medical Laboratory Technology program opened her eyes to the critical role laboratory professionals play in patient care. The program not only enhanced her technical abilities, but also strengthened her confidence.



Joshua Wilson

N.C. Community College System Dallas Herring Achievement Award Recipient for Alamance Community College

Joshua Wilson of Efland, NC is a Business Administration student. A military veteran, he served three combat tours in Afghanistan and Iraq before he was honorably discharged due to medical disabilities. Joshua says he felt uncertain about his future because his past as an underachieving student due to undiagnosed ADHD still haunted him. With his wife's support, Joshua came to appreciate that he simply had a different style of learning, prompting him to enroll at ACC. At the college he has gained a renewed sense of direction. As he pursues an associate's degree in Business Administration, Joshua has volunteered with ACC's Veteran's Office, helping other veterans to acclimate to the campus environment. He hopes to become a peer support specialist with the Durham Veterans Administration.



Katherine Hackney

N.C. Governor Robert W. Scott Student Leadership Award Nominee

Katherine Hackney of Bennett, NC is pursuing an associate's degree in Agribusiness Technology. Serving as vice president of the Student Government Association, she has been provided the opportunity to exhibit her natural spirit of leadership, engagement, and service in campus and community projects this year. Katherine demonstrated compassion and commitment in assisting with relief efforts for the victims of Hurricane Helene in western NC. She assisted ACC's FLORA and Animal Care Club collection of donations and personally traveled to Blue Ridge Community College to deliver them. Katherine says the experience taught her that leadership is about being present, building connections, and fostering hope.

By the *Numbers*

Foundation Financial 2024-2025



1,000
Students Supported



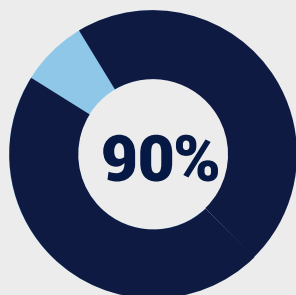
\$21.2M
Total Financial Assets

As of June 30, 2025, the ACC Foundation's endowment was comprised of over 170 individual funds totaling approximately \$18.1 million. Total financial assets of the ACC Foundation exceeded \$21.2 million.

Management



The ACC Foundation's financial assets are overseen by an Investment Committee consisting of twelve volunteer business professions. The Investment Committee establishes policies for the management of the assets and employs Trust Company of the South to carry out day-to-day investment activities.



Designation of Endowed Funds

Programs and Expenses



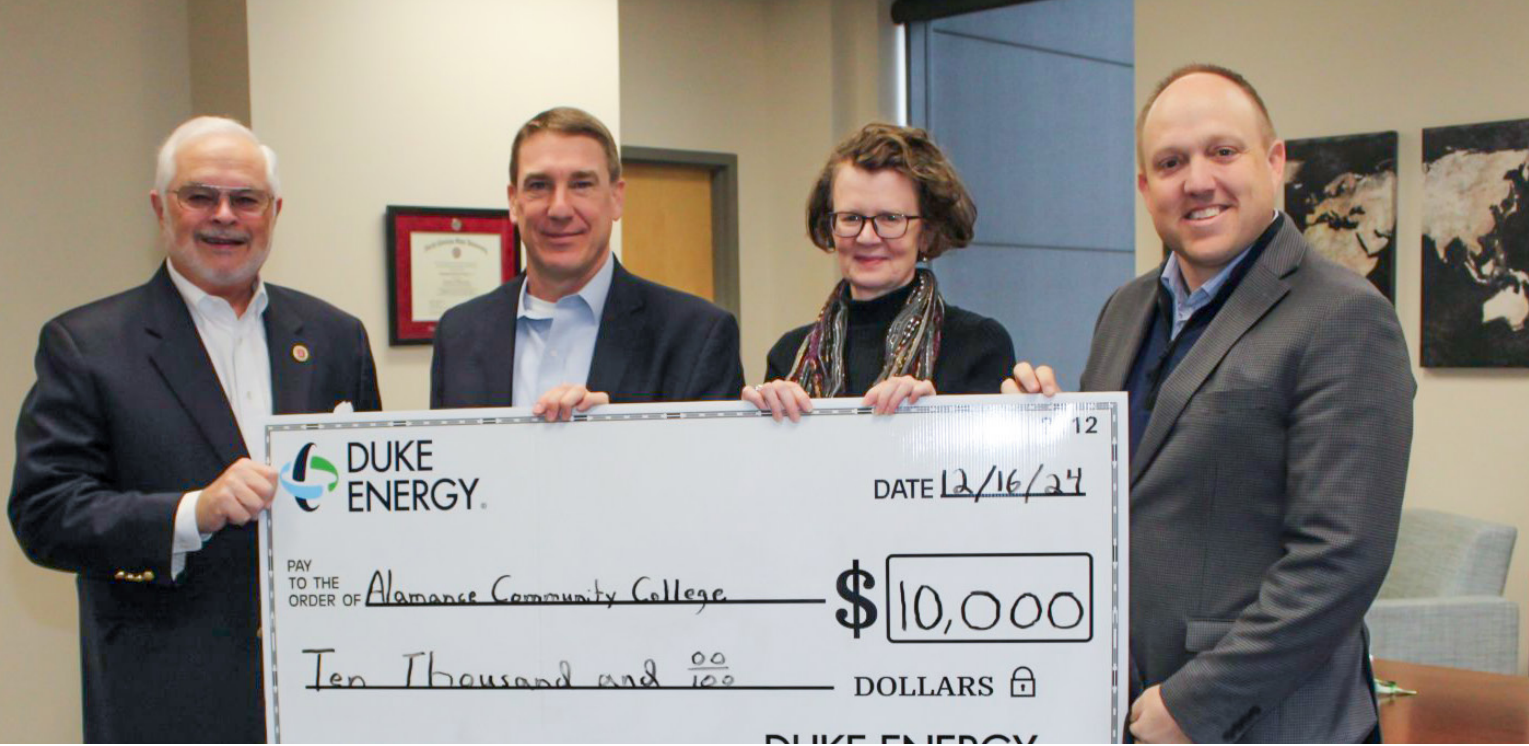
\$794,226
Scholarships & Aid



\$818,786
Program Enhancement



\$265,660
Support Services



Duke Energy Foundation Grant Fuels Workforce Scholarships

The Alamance Community College Foundation received a \$10,000 grant from the Duke Energy Foundation to support scholarships that empower students entering high-demand workforce programs. This gift underscores the shared commitment of both organizations to advancing training in critical fields and making education accessible.

The grant is earmarked to provide tuition, books, and supplies to low-income students, pursuing programs in energy-related sectors such as advanced manufacturing and cybersecurity. Additional support will reach students through emergency assistance grants, childcare funds, and work-study options. By targeting both technical training and wrap-around resources, the Foundation ensures barriers are removed and pathways to durable careers are opened.

The longtime partnership between Duke Energy and ACC has included philanthropic support across environment, training, and community efforts, most

notably a \$97,500 River Resources Grant in 2019 that restored prairie habitat on the lower campus. Now, with the new funding, the College's efforts to align workforce programs with industry needs gain another boost.

“Workforce development isn’t just about credentials, it’s about creating generational change. With this investment, we are helping ensure a skilled pipeline that supports a stronger economic future for our region.”

- Hank Henning of the Duke Energy Foundation

The ACC Foundation has awarded scholarships and financial aid since 1983, supporting students, faculty professional development, and long-term institutional growth. This latest grant adds to that legacy, making it possible for more students to step into training with confidence and purpose.

In a region where economic opportunity depends on prepared talent, this gift positions ACC to continue its mission: transforming lives, strengthening families, and fueling the local economy.

Gifts With Impact

Foundation Donors

The ACCF recognizes the following donors for the July 1, 2024–June 30, 2025 fiscal year.

President's Circle (\$100,000.00 +)

Brayton Family Charitable Foundation
Carroll M. Shoffner Charitable
Remainder Unitrust

Director's Circle (\$50,000.00 +)

Cone Health
The J.C. and Fran Dillingham Fund,
Alamance Community Foundation
Golden LEAF Foundation

Partners Circle (\$10,000.00 +)

One anonymous donor
Ametek
AT&T
Dr. Janie Benson
Carolina Biological Supply Company
Vernon and Katherine Clapp
Duke Energy Carolina
Linda and Dick (A) (T) Fisher
Foundation Medicine, Inc.
Glen Raven, Inc.
Mrs. Denise B. Heckman
Mr. and Mrs. Samuel P. Jones
Kernodle Clinic
Mr. Robert G. Morrow Jr.
Nina E. Rusk and J. Alton Hosch Fund
for Education, Renaissance Charitable
Foundation
Ms. Elizabeth Sanders
Sandvik Coromant
John (A) and Ashley Scott
Mr. and Mrs. William C. Scott Sr.
SECU Foundation
Twin Lakes Community
United Way of Alamance County
Mr. David B. Ward

Haw River Circle (\$5,000.00 +)

Bank of America Charitable Foundation
Joanna L. Brownstein and Carolyn Harley

Community Savings Bank Fund
Alamance Community Foundation
Duncan Quality Tools LLC
Follett Higher Education Group
Steen and Gary Gorby
Mr. Sam Hargrave (A)
Doug (FB) and Laura Hargrove
Estate of Mr. and Mrs. Thomas Hogen
Interstate Narrow Fabrics, Inc.
Hon. Robert F. and Mrs. Cathy (R) Johnson
Mr. James W. Kirkpatrick (FB)
Mr. Paul E. Magdarz (A)
McCandless Collection
NC IDEA Foundation
North Carolina Humanities Council
Mr. (A) (FB) and Mrs. Jack R. Overacre Jr.
Samet Corporation
Dr. Michal Foriest Settles and Family
Smith Family Foundation
Bill and Sue Smith
Sports Endeavors LLC
Ms. Dawn Sternal
Triangle Grading and Paving, Inc.

Alamance Circle (\$1,000.00 +)

One anonymous donor
1st Savings and Loan Association
Susan Abernethy (A) (R)
and Dennis Rasmussen (A) (R)
ACC Student Government Association
Alamance County Beekeepers Association
Alamance County Extension Master
Gardener Volunteers
Alamance County Human Resources
Association
Alamance Region of the Antique
Automobile Club of America
Alley, Williams, Carmen & King, Inc.
Alpha Delta Kappa Sorority - ETA Chapter
American Legion Post #427
Ms. Marie Scott Amon
Caroline and Ben Ansbacher
Dr. David and Mrs. Adelina Asher
Atlantic Union Bank
Auxiliary of American Legion Post #427
Mr. (FB) and Mrs. Jerry A. Bailey
The Bailey Family
Leonard and Carole Barnard
Mr. and Mrs. Rick Barnes
Charlene (FB) and Randy Barrett
Bartlett Tree Experts
Bellingham - Harris Wealth and
Retirement Planning
Bobbitt
Ms. Margaret L. Boswell (E)

and Mr. Lawrence Vellani
Mr. (R) and Mrs. R. Wayne Bowery
Steve and Connie (A) Bowman
Dr. and Mrs. Michael W. Brennan
Dr. Adam Bridges (E)
Jim (T) and Kim Butler
Ms. Vickie D. Byrd (EFB)
Chandler Holdings Inc.
David and Tammy Cheek
Civitan Club of Burlington
Jackie (FB) and Steve Cole
County Ford Inc.
Michael and Mary Ellen Cross
Mrs. Sarah Neal Currin
Custom Floral Creations
D & K Soil Consultants
J. Ray (FB) and Amy Deal
Dr. Marla Dunham (R)
and Reverend Robert E. Dunham
Cathy and Reid (A) (EFB) (ET) Dusenberry
Senator (T) and Mrs. (A) Anthony E. Foriest
Nancy and Erwin Fuller Family
Mr. and Mrs. W. Scott Fuller
Senator Amy Galey and Mr. Fred Galey
Dr. Algje (R) and Rosalyn Gatewood
Gilliam Bell Moser LLP
Bill (FB) (T) and Martine Gomory
Ms. Ellen Greeson
Brenda and Blairton Hampton
Dr. J. Patrick Harman
Mrs. Bonnie S. Harmon
Mr. Brad Harmon (FB)
Charles R. (FB) and Sylvia T. (A) Harris
Mr. and Mrs. Gary E. Harris
Mrs. Gail S. Harwood
Hillsborough Garden Club
Dr. Cristy Holmes (E)
Honda
HUB International
Ms. Kathryn Hykes
IndTool, Inc.
Dr. Ken (E) and Amy Ingle
Dr. (FB) and Mrs. G. Wallace Kernodle Jr.
Elizabeth (FB) and Trey Kirkpatrick
The Labcorp Charitable Foundation
Sandra and Bill Leach
Thurmon and Rosia (A) M. Leath
Mrs. Susan and Richard Letvak
Mr. (EFB) and Mrs. Reginald J. Lipscomb Sr.
Ms. Darlene Listopad (E)
Mr. (A) and Mrs. (A) Jesse W. Long
Lowe Funeral Home & Crematory, Inc.
Steve and Martha Madden
Martin Marietta
Ms. Christine Mathews (FB)
McClure Funeral Service
Mrs. Sonya McCook (E)
Mebane Business Association
Mebane Woman's Club
David (FB) and Cathy Moore
Mr. Fred G. Morrison Jr.
Jimmy (EFB) and Brenda Moser
Mrs. Britt M. Nordh
North Carolina Campus Engagement
Mrs. Patricia Oakes
Mr. and Mrs. Wade V. Pennington
Mr. David E. Peters
PHE, Inc.
Mr. and Mrs. David L. Phillips
Barbara and Dale Phipps
Mrs. Rhonda Pierce (E)
Pinnacle Financial Partners

Pittman & Steele, PLLC
 Plantworks Nursery, Inc.
 The Jim and Anne Powell Donor
 Advised Fund, Alamance
 Community Foundation
 Mr. Thomas E. Powell IV
 The Elwood Prater Scholarship Fund,
 Alamance Community Foundation
 Dr. Scott T. Queen (A)
 RE/MAX Diamond Realty
 Al (A) and Candace (A) Rey
 Reynolds Family Fund,
 Alamance Community Foundation
 Ms. Carolyn Rhode (E)
 Mr. and Mrs. Peter S. Rhode
 Mr. and Mrs. Barney D. Rice
 L.J. Rogers, Jr. Trucking, Inc.
 Rotary Club of Alamance
 Sandra and Geoff Russell
 Willie Saul and Son Plumbing, Inc.
 Dr. Charles (T) and Sandy Scott
 Mrs. Connie T. Scott
 Edwin and Terry Scott
 Ms. Jan Scott
 John (A) and Ashley Scott
 Mr. Wallace M. Shearin (R)
 Mr. Kelly Shirley and Ms. Martha Zeagler
 John and Holly Sims
 Mr. Nathan "Nate" Smith (E)
 Justin (E) and Jessica Snyder
 SparkForce, the FMA Foundation
 Mr. Dale Steams
 Steams Ford, Inc.
 Mr. Derek Steed and Ms. Katherine Carter
 Mrs. Leonorah Stout
 Dr. Louis and Susan Scott Sutton
 Syntech Architectural Signage
 U.S. Chamber of Commerce
 United Therapeutics Corporation
 Ms. Ana Vega
 Dr. Clara Vega (R) and Dr. Fernando A.
 Suarez
 Mr. Jose Gabriel Vega Valencia
 The Vernon Law Firm
 Mr. (FB) and Mrs. Donald R. Von Hagen
 Walmart Distribution Center 6858
 Ms. Jeannie Watkins
 Carolyn and Mike White
 Walter Williams High School Class of 1962
 Wilson Brown Sock Company
 Mr. and Mrs. (A) Taylor L. Wilson
 Dr. and Mrs. D. Reid Woodard
 Mr. and Mrs. Todd G. Woodard
 Mr. (FB) and Mrs. Troy W. Woodard Jr.

Investor Circle **(\$500.00 +)**

Two anonymous donors
 Mr. Christopher N. Ackiss
 Alamance-Caswell Medical Society
 Mr. and Mrs. Jeffrey Andrews
 Mr. Carlos Aponte (E)
 Mr. Rodney W. Barber (A) (E)
 Jennings Bryan-Chappell Insurance
 Services
 Burlington Woman's Club, Inc.
 Bob and Barbara Byrd
 Camcor Inc.
 Mr. Ronald O. Cardwell
 Carolina Supply, Inc.
 Mr. Steven J. Carter (T)
 Mr. (A) and Mrs. James A. Cartner

Central Carolina Kidney Associates
 Century Products LLC
 Dr. Roslyn M. Crisp (T)
 Mr. and Mrs. Robert C. Davis Jr.
 Emissaries Motorcycle Ministry Inc.
 Ms. Susan (FB) Ezekiel
 First Bank
 Dr. Richard Foster
 Mr. and Mrs. (A) John F. Gee
 Beth (A) and Pete (T) Glidewell
 Tonja and Brett Guthrie
 Mr. and Mrs. (R) James N. Hall Jr.
 Mr. Ronald L. Hall (R)
 Mr. and Mrs. Nat T. Harris
 Hawfields Civitan Club
 Bob and Ami (FB) Hill
 Hip Labels, LLC
 Mayor Ed Hooks and Mrs. Sandra R. Hooks
 (A) (R)
 Mr. (FB) and Mrs. Tom Humphrey
 Mr. (A) and Mrs. Donald W. Ingold
 Ms. Jennifer Jones (E)
 Mr. (A) and Mrs. T. Blake Keller
 Martin Luther King Jr. Coalition of
 Alamance County
 Knit Wear Fabrics, Inc.
 Ms. Miranda M. Kotarba (A) (E)
 Benjamin F. Lowe Jr. DDS MS
 The Herbert Z. Lund Scholarship,
 Community Foundation of Greater
 Greensboro, Inc.
 Ms. Darlynn McCarter
 Dr. (FB) (R) and Mrs. W. Terry McNeill
 Modem Chevrolet I Cadillac of Burlington
 Mr. Grover W. Moore Jr. (FB)
 Morgan's Towing
 Jack O'Kelley Sertoma Club
 Mr. Robert and Dr. Sarah Olenick
 Mrs. Bettie C. Pendergraph
 Piedmont Feed and Garden Center
 Dr. (A) and Mrs. Samuel C. Powell
 Mr. (R) and Mrs. Charles Pressley
 Ms. Jeannie H. Proctor (R)
 Ms. Donna Pruitt (A) (E)
 Ms. Beverly S. Pugh (A)
 Ms. Joanna Roberts (A) (E)
 Ms. Shekitha F. Rogers (A) (E)
 Carlyle and Katie Schomberg
 Mr. and Mrs. David W. Schomberg Jr.
 David and Marg Schultz
 Dr. and Mrs. Edwin H. Scott
 Mr. and Mrs. W. David Sellers
 Sharpe Funeral Home, Inc.
 Ms. Martha Sink
 Stout Stuart McGowen & King LLP
 Mr. and Mrs. Albert R. Styracula
 Terra Green Landscapes
 Mr. and Mrs. C. Avery Thomas Trust
 Company of the South Mr. and Mrs.
 Steve A. Van Pelt Ms. Ines Vega
 Mr. Jack Vega
 Dr. Jody P. Wallace
 Dr. and Mrs. W. Lee Williams Betsy
 Scott Winborne
 Dr. Connie R. Wolfe (E)
 Dr. John B. Wolverton Jr. (R)
 Yellowstone Landscape

Management Circle **(\$250.00 +)**

Three anonymous donors
 ACC Nursing Club

Mr. Harold R. Adderholdt (A)
 Ms. Melba M. Aguirre (A) (E)
 Bettina (E) and Etienne Akukwe
 Dr. Patricia Alghali (E)
 Ms. Sarah Barham (E)
 Mr. (EFB) and Mrs. Pete Blaetz
 Blue Ribbon Diner and The Village Grill
 Mr. Thomas Bongaerts
 Dr. Yun L. Boylston
 Mr. (FB) and Mrs. Charles T. Canaday Jr.
 Mr. and Mrs. Jennings I. Chandler, III
 Mr. Marvin F. Clark (A)
 Cobb, Ezekiel, Loy & Company, PA
 Mr. (R) and Mrs. Thomas G. Conally
 Mr. (A) and Mrs. David L. Crabbe
 Mr. Dwight M. Davidson III
 Mr. Reginald Davis
 Ms. Mary Davis Reinhartsen
 De Sales Trading Company, Inc.
 Ms. Debra Dixon-Doss (A) (R) and Mr. Gary Doss
 (A)
 Mr. William H. Fonville (A) (R) Scott and
 Lisa Fowler
 Foy-Workman Construction, Inc. Mr. and
 Mrs. Frank L. Frederick
 Channing and Janyth (R) Fredrickson
 Mrs. Rose Anne Gant
 The Garden Club of the Triad
 Geico Insurance
 Christian and Alana Germain
 Ms. Tonya G. Goins
 Ms. Mindy Graves (E)
 Dr. Sandra B. Greene
 Mr. Jerry Hackney (E)
 Mr. Nicholas H. Harris
 Mr. and Mrs. J. Wade Harrison
 Mr. Thomas M. Hartman (E)
 Dr. and Mrs. Richard D. Henderson
 Mr. (A) and Mrs. Sam Hobgood
 Traci (A) (E) and Mike (A) (E) Holt
 Ms. Lisa R. Huffman (A) (E)
 Dr. Lisa Johnson (E)
 Mr. and Mrs. Tyler D. Johnson
 Mr. Josef von Jones (E)
 Dr. Martha Keels
 Labels, Tags & Inserts, Inc.
 Ashley (FB) and Joshua Lane
 Ms. Heather T. Laws (A) (E)
 Ms. Brendle Leggett (FB)
 Ms. Ashley Lewis (E)
 Ms. Phydesia Lewis (A) (E)
 Living Landscapes Inc.
 Mr. Ian T. Macklin (E)
 Ms. Savinna C. Mangalindan (A)
 Ms. Debra McCusker (E)
 Ms. Lindsey S. McDonald (A) (E)
 Ms. Mary C. Mebane (R)
 Dr. and Mrs. Michael J. Menz
 Mr. (A) and Mrs. (R) Tim Miles
 Greg (A) and Dorena (A) (E) Miller
 Mr. and Mrs. Donald L. Moore
 Mrs. Mary Beth Morgan (E)
 Sandi (A) (R) and Bob Moulton
 My Orthodontist North Carolina
 Dr. Aaron P. Noble (A) (EFB) and Ms. Angela
 Satterfield
 Ms. Tamara H. Norris
 Mr. Harry E. Palmer (R)
 Piedmont Electric Cooperative
 Ms. Lisa Price
 Prime Personnel Resources, Inc.
 Dr. and Mrs. Joseph R. Pringle Jr.

Mr. Kirk Puckett (R)
 Ms. Wendy Randall and Mr. Rodney Chase
 Ms. Caryn Richmond
 RJR Electric, Heating and Air
 Ms. Vernell B. Rone (E)
 Rudd Lawn Care and Landscaping
 Ms. Logan G. Savits
 Ms. Ricketta C. Self (A) (E)
 Mr. and Mrs. Stuart Sioussat
 The Rev. Amy Slaughter Ph.D.
 Ms. Jennifer L. Smith (A) (E)
 Ms. Linda G. Smith (A) (E)
 Ms. Stacy F. Smith (A)
 Ms. Ann M. Snell (E)
 Liz (A) (R) and Tony (A) Solazzo
 Mr. (EFB) (ET) and Mrs. Carl R. Steinbicker
 Ron and Barbara Sturgill
 Mr. Christopher Swinton (E)
 Lisa (FB) and Glenn Thaller
 Ms. Miasha Torain (A) (E)
 Ms. E. Gerry C. Turner (R)
 United Community Bank
 Ms. Jan Vass (E)
 Ms. E. Rose Webster (E)
 Mr. Edward T. Williams (R)
 Mr. Michael I. Williams (E)
 Mr. (R) and Mrs. William H. Woodruff
 Mr. Matthew Yandle
 Mr. Kouassi Yao (A) (E)
 Jon (E) and Barb (A) (E) Young

Stakeholders Circle (\$100.00 +)

Eight anonymous donors
 The Acorn Inn
 Mr. James Adkins (E)
 Ms. Nancy S. Aldridge
 Ms. Sharon Alessandri
 Ms. Esther B. Andreas (A)
 Mr. Craig Andrews (E)
 Dr. and Mrs. Ralph C. Ashley
 Ms. Heather Dean Atkins (A)
 Dr. and Mrs. Victor Au
 Ms. Gina Bader (E)
 Ms. Christy Bailey (E)
 Mr. Brian Barringer (E)
 Mr. and Mrs. Percy Baynes
 Big Branch Nursery
 Mrs. Hayvenyer M. Bigelow (A) (R)
 Ms. J. Kathryn Blanchard
 Bobby's Friendly Towing
 Mr. and Mrs. C. Keith Brewer
 Mr. Simon R. Brigman Sr.
 Ms. Ellen J. Brown
 Mr. and Mrs. (A) Larry D. Brown
 Ms. Jennifer Brownell (E)
 Ms. Gail Galbraith Budd (R) and Mr. Gary Budd
 Mr. Edwardo Calle
 Ms. Rubetta Carr
 Dr. Robert W. Carter
 Drew and Terri Cassesse
 Ms. Martha Cassesse
 Mr. Thomas E. Chandler
 Laurent (R) and Ruth Changuion
 Chef Jay Christmas (A)
 Ms. Barbara Christy
 Mark (E) and Donna (A) Clapp
 Mr. and Mrs. Christopher W. Clemmons
 Jim and Beth Connors
 Ms. Hilary Cook (E)
 Ms. Amy Cowen
 Mr. and Mrs. James B. Crouch Jr.

Mr. and Mrs. Alvin Crumbliss
 Ms. Eve Cuning
 Ms. Suellyn Dalton (R)
 Ms. Frances Daniel (A)
 Mr. (A) (E) and Mrs. Thomas R. Davis
 Jack and Beth Dixon
 Gil (R) and Becky Dodson
 Ms. Shanina Doe (E)
 Mr. Aaron D. Dunham
 Ms. Andrea Edwards (E)
 Ms. Kelly Elder
 Ms. Sherri Elliott (E)
 Ms. Anita Ellis
 Mr. and Mrs. Christopher Ely
 Ms. Julie Scott Emmons (T) and Mr. Karl Emmons
 First Reformed United Church of Christ
 Ms. Tabithe Fisher (E)
 Dr. Marisa Flores Kathard
 Flowers Bakery
 Ms. Sarah Folckomer (A)
 Ms. Julie Foster
 Mr. Terry Foushee
 Mr. Caleb E. Fox (A) (E)
 Ms. Autumn K. Frandock
 Carolyn and Richard Franks
 Ms. Joan Fuquay
 Assistant Chief and Mrs. Christopher E. Gaddis
 Ms. Laura Gaines (E)
 Ms. K. Anne Gant
 Ms. Yazmin Garcia Rico (FB) and Representative Ricky Hurtado
 Mr. Kevin N. Garrett (A)
 Karen (A) and Steve (A) Garrison
 Ms. Rebecca Gneda
 Ms. Carolyn P. Gorga
 Dr. Laura Gorham (R)
 Mr. Stephen M. Gronback (A)
 Mr. Luke Guthrie (A) (E)
 Mr. Perry Hardison (R)
 Ms. Kelli S. Harrell (A) (FB)
 Frank and Jennell Harris
 Dr. Tyler J. Harvey (A) (E)
 Estate of Otha C. Hawkins
 Mr. and Mrs. Henry R. Heath Jr.
 Ms. Nancy Hinshaw
 Dr. Nancy Honeycutt (E)
 Mrs. Susanna Hom
 Ms. Barbara S. Howard
 Mr. and Mrs. (A) (R) David W. Howell
 Mr. Harold J. Hunnicutt
 Ms. Susan J. Isley (A)
 Mr. Kevin Jayes
 Ms. Maia Johnson (E)
 Mr. and Mrs. J. Robert Johnson
 Mr. and Mrs. John M. Jordan
 Ms. Kristine A. Kahn (A)
 Ms. Kathy Kay (A)
 Mr. Fred Keith (E)
 Dr. and Mrs. Harold B. Kernodle Jr.
 Bob and Terri Kirchen
 Ms. Heather Kline (A)
 Ms. Ivy Lamoreaux (A)
 Landvision Designs, Inc.
 Dr. Roger Lane (E)
 Dr. Helen R. LeGette
 Dr. Melanie Lewis (E)
 Ms. Marcia Livesay (E)
 Ms. Lisa Capps Lloyd (A) (E)
 Ms. Denise Lloyd-Forbes (E)
 Local 648 Firefighters Union

Ms. Gale Logan (E)
 Mr. and Mrs. Frank A. Longest Jr.
 Ms. Suzanne Lucier (R) and Dr. Thomas Lucier (R)
 Ms. Dana G. Lunday (R)
 Dr. Catherine M. Lynn
 Mr. Stephen G. Mabe (A)
 Ms. Kimberly Mahaffey (E)
 Ron and Vicky Mahrt
 Mr. Marcelle W. Malone (E)
 Ms. Laura Manigrasso
 Ms. Adanari Martinez (A)
 Ms. Marti Matanzo (E)
 Mr. Zachary Mathews (E)
 Mr. and Mrs. Columbus W. Mayo IV
 Linda (R) and Dickie McAdams
 Mr. James McCormick (E)
 Mark D. (A) and Gwendolyn McIntyre
 Dr. Neill McLeod
 McPherson Cleaners, Inc.
 Dr. Howard E. Miller
 Mr. Troy W. Millikan
 Ms. Jennifer Mock (E)
 Ms. Georgiann Monhollen
 Ed (A) and Gail Morrah
 Dr. Martin Nadelman (R)
 Rev. and Mrs. J. Marshall Neathery
 Mr. and Mrs. Tommy V. Oliver
 Ms. Naw Mya Honey Oo (A)
 Marrianna and Jim Putnam
 Ms. Brenda K. Pace
 Mr. David W. Parker (R)
 PB Distributors, Inc.
 Mr. Erik Perel (E)
 Mr. Michael K. Perry (A) (E)
 Mr. Ruffin Phillips
 Mr. David Prevatte (R)
 Ms. Ashley Pryer (E)
 Ms. Kim A. Ragland
 Ms. Victoria Rans (E)
 Ms. Maria A. Redding (E)
 Mr. and Mrs. Jeffery Reynolds
 Mr. (R) and Mrs. Frank Rhodes
 Mr. John Rich (E)
 Ms. Betty Roberts
 Mr. Roland O. Roberts (E)
 Ms. Nicole A. Rone (A) (E)
 Ms. Carrie Russell (E)
 Ms. Michelle Sabaoun (E)
 Ms. Audrey Sanders
 Dr. Kevin Sargent (E)
 Ms. Lorena J. Sarmiento Espinosa (E)
 Dr. Demetra Schermerhorn
 Dr. Thomas J. Schermerhorn
 Mr. and Mrs. William C. Schley
 Mary (A) and Johnny Schronce
 Mr. and Mrs. Anderson H. Scott II
 Mr. (A) and Mrs. David M. Scott
 Ms. Dawn Scott-Raxter and Mr. Ronald D. Raxter
 Mr. Daniel Sigmon (E)
 Mr. Peter Silaghi
 Ms. Sherri A. Singer (E)
 Ms. Leah D. Singleton
 Mr. Trevor L. Slosek (A)
 Ms. Barbara Small
 Philip and Rene Smith
 Mr. Seraphim Smith (A)
 Mr. Thomas Smothers
 Mr. and Mrs. Frank T. Speed Jr.
 Marty and Pam Stadler
 Mr. and Mrs. C. Thomas Steele Jr.

Ms. Kay Stutes
 Mr. Gabriel Suarez-Vega
 Ms. Mariana Suarez-Vega (A)
 Mr. Matthew Tackitt (E)
 Scott and Jackie Tanseer
 Mr. (A) and Mrs. Howard C. Tate
 Ms. Charlene Teague
 Ms. Suzanne C. Thompson (A)
 Mr. James E. Tunstall (A)
 Mr. and Mrs. James Tunstall and Ms. Wendy Randall
 Mr. Eddy van Hunnik (E)
 Ms. Yholima Vargas Pedroza (E)
 Mr. Christopher Verdeck (E)
 Ms. Jennifer Walker
 Dr. and Mrs. John B. Walker III
 Mr. Todd Wanless (E)
 Mr. and Mrs. (A) Michael D. Warren
 Mr. Glenn Watts (A)
 Sheriff (A) and Mrs. Michael L. Welch
 Wells Fargo
 Ms. Cassie White (E)
 Brigadier General (T) and Mrs. Blake Williams
 Mr. Matt Williams and Ms. Colleen C. Mills
 Mr. and Mrs. Scott L. Williams
 Mr. Charlie N. Wilson
 Ms. Vicki H. Wilson (A) (R)
 Woods of Terror
 Ms. Susan Wyatt Gattis
 Ms. Glenda Yount (E)

Friends (\$1.00 +)

Eight anonymous donors
 ACC Cosmetology Department
 ACC Flora Club
 Mrs. Donna C. Allen (A)
 Mr. James Armstrong (R)
 Mr. Brian Arnold (E)
 Autobell Car Wash, Inc
 Ms. Nikitas Ayscue
 Dr. David Battigelli (E)
 Ms. Emma Beckham
 Don and Sharon Berry
 BJ's Wholesale Club
 Ms. Linda Blake
 Mrs. Lecia B. Booe (A) (R)
 Dr. David M. Bronstein and Ms. Carla Fenson
 Mr. Dale Brown (A)
 Ms. Emily C. Brown and Ms. Ashley Brown
 Ms. Angie Brummitt
 Mr. Henry (A) Buckner
 Ms. Pamela Buff
 Ms. Ruth Burnette (R)
 Ms. Carolyn Burrus
 Ms. Nancy J. Butler (A)
 Ms. Ilene F. Byrd
 Mr. Juan Pablo Calle Vega
 Mr. (E) and Mrs. Albert Catlos Jr.
 Ms. Norma Caviness
 Mr. (A) and Mrs. Carroll M. Clayton
 Kevin (A) and Chrissy Cobb
 Mr. and Mrs. Craig D. Cohen
 Ms. Beverly S. Corbett
 Mrs. Agnes K. Coughlin
 Ms. Jaisy Courtney
 Ms. Ann Cowen
 Ms. Heather M. Crabtree (A) (E)
 Mr. David L. Crane (E)
 Mr. Mitchell L. Crawford (A) (E)

Dr. and Mrs. Mark Crissman
 Mr. (A) and Mrs. Charles A. Dabbs
 Mrs. Susan Dalton (R)
 Ms. Amanda P. Davis (A) (E)
 Ms. Mattie L. Davis (E)
 Ms. Victoria Davis
 Mr. and Mrs. William P. Douglas
 Mr. Khalif Drinkard (A)
 Ron and Judy (A) Driscoll
 Ms. Patricia J. Dyer (A) and Mr. Steven M. Cole
 Mr. Derrick Eleazer II
 Rebecca (E) and Aaron Fecher
 Ferrara Pizza & Pasta
 Ms. Ana Fleeman (A) (E)
 Ms. Cheryl Foster
 Ms. Marilyn Fox
 Mr. Ronald Franck
 Mr. (R) and Mrs. Joseph H. Fryar
 Dr. Thomas D. Gaffney (R)
 Ms. Stephanie Garzon (E)
 Mr. and Mrs. Robert M. Gasparello
 Mr. Nicholas Goble (E)
 Ms. Aimee Gordon (A) (E)
 Dr. Keith Graves (E)
 Mr. and Mrs. (A) Douglas M. Graves Sr.
 Mr. and Mrs. Michael Graybeal
 Mr. Jaryn Green (A)
 Ms. Audra Grice
 Ms. Darsell J. Hadley (A) (E)
 Ms. Rosie Hadley (A)
 Ms. Jennifer L. Hamilton (E)
 Ms. Risa Hanau
 Ms. Sarah Hardin (E)
 Ms. Kate Harrill
 Ms. Betty C. Harris (R)
 Charles H. (EFB) and Sylvia S. Harris
 Ms. Sara Heckler (E)
 Melinda (E) and Victor Holland
 Ms. Susan E. Holt (R)
 Mike and Bonita Hooper
 Ms. Beverly S. Hornaday
 Ms. Denise Houston
 Mr. Robert A. Hudson
 Huffman Oil Company, Inc.
 Ms. Kristi Hussey (E)
 Ms. Clara Iacoucci
 Ms. Jennifer Icenhour
 Isley Construction
 Ms. Deana Ivey (E)
 Mr. and Mrs. Kenneth L. Jarvis
 Mrs. Robert E. Jessup
 Ms. Monserrat Jimenez (A)
 Dr. and Mrs. David S. Johnson
 Ms. Barbara Kimber (A)
 Ms. Jennifer F. Kimrey (A) (E)
 Ms. Kar in Langbehn-Pecaut (A)
 Ms. Paula Lassi (A) (E)
 Ms. Angela Laukaitis (A)
 LeBauer Allergy and Asthma
 Ms. Carolyn Lee
 Mr. Isaac Lemon (A)
 Ms. Sherry Leonard
 Ms. Mary M. Lewallen (A) (E)
 Ms. ElizaBeth Lewis (A)
 Ms. Lisa Liggins-Pulliam
 Ms. Joyanna Livingston (A)
 Mr. (A) and Mrs. Henry C. Long
 Ms. Liz Makula
 Ms. Vanessa Hicks Maliski (A)
 Ms. Carol H. McBroom
 Mr. William F. McDonnell (A)

and Ms. Vangie A. Foshee
 Ms. Melissa McKenzie
 Mrs. Marjorie S. McNamara
 Ms. Deborah McPherson
 Ms. Debbie P. Medlin
 Mrs. Patricia S. Miller (R)
 Ms. Penny V. Miller (E)
 Ms. Carolyn Mongeau
 Ms. Judy Morris
 Mr. Thomas Mort
 Ms. Maria Mosquera
 Ms. Angela Munford
 Mr. (A) and Mrs. Don C. Murray
 Mr. Randy L. Neel Jr. (A)
 Laura (A) and Albert Nisbet
 Ms. Penny S. Oliver (A) (E)
 Mr. Elton Parker
 Ms. Jane Pendergraph
 Robert and Meg Phipps
 Mr. Derall Pittman Jr. (A)
 Ms. Kathryn H. Porter (E)
 Ms. Devon Powell
 Ms. Sharyike Powell
 Ms. Talat Qazi (A) (E)
 Ms. Amber Ray (E)
 Mr. Brad Ray (A) (R)
 Mr. and Mrs. John Reardon
 Ms. Angela Rehm
 Ms. Patricia Reyes-Meyer
 Ms. Judith K. Roberts (E)
 Mr. (A) and Mrs. Ernest G. Robinson
 Mr. and Mrs. (A) Billy Joe Routh
 Ms. Sherry K. Saul (A)
 Ms. Susan Schut
 Ms. Selena Sebastian Bautista (A) (E)
 Mr. Jimsey Shaffer
 Mr. Duncan Shaw (R)
 Dr. Ben Shirley (E)
 Mr. and Mrs. Steven Shoffner
 Mr. Douglas C. Smith
 Ms. Shylon Smith (E)
 Mr. Steve Smith (A)
 Ms. Beth Snow (E)
 Lynda and Charles Stanley
 Dr. and Dr. Michael Stoller
 Mr. Josh P. Strickland (A)
 Mr. Andres Suarez
 Mr. Scott Sublett
 Ms. Kristen Sutherland (E)
 Ms. Elizabeth Sutton (E)
 Ms. Jaime S. Sutton (E)
 Ms. Barbara Z. Thaden (E)
 Ms. Barbara Thornton (E)
 Truist
 Mr. Manuel Trujillo
 Ms. Susan Turner (E)
 Dr. Ramesh Upadhyaya (E)
 Ms. Lakeisha M. Vance
 Mr. Paul Vandre
 Ms. Beatriz Vega T
 Mr. and Mrs. Mark D. Walters
 Mr. Brian Scott Ward (E)
 Mr. Jeff White (A)
 Mr. Brandon R. Williamson (E)
 Mr. (A) and Mrs. Joseph L. Wood

Donor Status Key

(A) Alumna/us
 (E) ACC Employee
 (FB) ACC Foundation Board Member (EFB is Emeritus Status)
 (R) Retiree
 (T) Trustee (ET is Emeritus Status)

Made In memory

Gifts made in memory of/by:

- Dr. and Mrs. Paul Abernethy
• Susan Abernethy and Dennis Rasmussen
- Vardy and Clara Abernethy
• Susan Abernethy and Dennis Rasmussen
- Mr. Buddy Aldridge
• Ms. Nancy Aldridge
• Mr. Michael L. Holt
- Ms. Nancy Andrews
• Ms. Suzanne Thompson
- Ms. Margaret C. (Martí) Asher
• Dr. David and Mrs. Adelina Asher
• Mr. Ronald O. Cardwell
• Jim and Beth Connors
• Mr. and Mrs. Michael Graybeal
• Ron and Vicky Mahrt
• Ms. Elizabeth Sanders
- Mr. Kevin Bilson
• Dr. David Bronstein and Ms. Carla Fenson
• Dr. Marisa Flores Kathard
• Mr. and Mrs. Joseph R. Pringle, Jr.
• Dr. and Mrs. John B. Walker, III
- Robert M. and Betty Y. Bowman
• Jim and Diane Barnwell and the
Employees of Huffman Oil Company
• Don and Sharon Berry
• Bobby's Friendly Towing
• Steve and Connie Bowman
• Ms. Ilene Byrd
• Ms. Norma Caviness
• Mr. Thomas E. Chandler
• Ms. Beverly Sharpe Corbett
• Ms. Susan Wyatt Gattis
• Donald and Cheryl Ingold
• Tommy and Becky Oliver
• Mr. Ruffin Phillips
• Billy Joe and Nancy Routh
• Steven and Faye Shoffner
• Ms. Charlene Teague
- Ms. Sandy Brownstein
• Joanna Brownstein and Carolyn Harley
- Mr. Jennings M. Bryan, Jr.
• Mr. and Mrs. Mark D. McIntyre, Sr.
- Mrs. Christine Buckner
• Mr. Henry N. Buckner
- Chief Don Bulla
• Ms. Denise Heckman
• Heckman Family
- Mr. Ivan Burger
• Mr. and Mrs. William C. Schley
- Mr. John Butler
• Mrs. Nancy J. Butler
- Mr. Gerald Cassese
• Ms. Sharon Alessandri
• Ms. Martha Cassese
• Ms. Denise Houston
• Ms. Carolyn Lee
• Local 648 Firefighters Union
• Ms. Carolyn Mongeau
• Mr. Thomas Mort
• Ms. Wendy Randall and Mr. Rodney
Chase
• James and Mary Tunstall
- Ms. Lucianna Cassese
• Ms. Sharon Alessandri
• Ms. Linda Blake
• Terri and Drew Cassese
• Ms. Martha Cassese
• Emissaries Motorcycle Ministry Inc.
• Ms. Rebecca Gnedá
• Mr. Jerry Hackney
• Ms. Denise Houston
• Ms. Carolyn Lee

- Local 648 Firefighters Union
 - Ms. Carolyn Mongeau
 - Mr. Thomas Mort
 - Ms. Wendy Randall and Mr. Rodney
Chase
 - Mr. James E. Tunstall
 - James and Mary Tunstall
- Mrs. Judy Clegg
• Ms. Linda Bryant Barbee
• Ms. Molly Wilkins Brady
• Ms. Alice Pickard Braxton
• Ms. Connie Pittman Burfield
• Ms. Pam McLaughlin Clark
• Ms. Cathy McClendon Davis
• Ms. Jane Odum Gray
• Ms. Frances McPherson Holland
• Ms. Judy King Jordan
• Ms. Laura Rice Robinson
• Ms. Nancy Jo Steele
• Mr. Phillip Walker
• Mr. Charlie N. Wilson
- Ms. Joan Connors
• Jim and Beth Connors
- Mr. Homer Corn
• Ms. Laura Pennington
- Mr. Cecil Crabbe
• Mr. and Mrs. David Crabbe
- Ms. Dorothy Hamm Crowder
• Ms. Ricketta C. Self
- Mr. Tony Dalton
• Alvin and Karen Crumbliss
- Dr. and Mrs. N. D. Ellis, Jr.
• Mr. and Mrs. James N. Hall, Jr.
- Ms. Merline Ellison
• Ms. Jeannie H. Proctor
- C. P. William and Jean Northrup Fisher
• Linda and Dick Fisher
- Mr. George Floyd
• Mr. Joseph Jones
• Ms. Nicole Rone
• Mr. Christopher Swinton
- Mark A. and Annie Futrell Foriest
• Senator and Mrs. Anthony E. Foriest
• Dr. Michal F. Settles and Family
- Mr. Larry Fuquay
• Dr. and Mrs. Ralph C. Ashley
• Jack and Beth Dixon
• Ms. Joan Fuquay
• Ms. Carolyn P. Gorga
- Mr. Wallace W. Gee
• Civitan Club of Burlington
- Mr. Austin Guthrie
• Carolyn and Richard Franks
• Tonja and Brett Guthrie
• Ms. Heather T. Laws
• Ms. Liz Makula
• Mrs. Patricia Oakes
• Mr. Peter Silaghi
• Ms. Cassie White
- Mr. and Mrs. James N. Hall, Sr.
• Mr. and Mrs. James N. Hall, Jr.
- Ms. Clara Hardin
• Ms. Elizabeth Brehler
- Mr. E. Hooper Harris
• Mr. Nicholas Harris
- Mr. J. Nimrod Harris, Sr.
• Amy and J. Ray Deal
• Mr. and Mrs. Gary E. Harris
• Mr. Nicholas H. Harris
- Shake and Eleanor Harris
• Mrs. Leonorah Stout
- Dr. John E. Harwood
• Ms. Sarah Folkcomer
• Mrs. Gail Harwood
- Ms. Susie Wolverton Hawes
• Dr. John B. Wolverton, Jr.

- Mr. Otha Hawkins
• Ms. Suellyn Dalton
• Ms. Debra Dixon-Doss
• Gil and Becky Dodson
• Dr. Marla Dunham
• Mrs. Annabelle Hawkins
• Ms. Jennifer L. Jones
• Ms. Debra L. McCusker
• Dr. Sandi Moulton
• Ms. Barbara Small
• Dr. John B. Wolverton, Jr.
- Mrs. Louise Heckman
• Mr. Thomas Bongaerts
• Mr. and Mrs. C. Keith Brewer
• Mr. Harold J. Hunnicutt
• Ms. Georgiann Monhollen
• Mary and Johnny Schronce
• Mr. Thomas Smothers
• Mr. and Mrs. Frank T. Speed, Jr.
- Mr. Michael Heckman
• Mr. Thomas Bongaerts
• Mr. and Mrs. C. Keith Brewer
• Mr. Harold Hunnicutt
• Ms. Georgiann Monhollen
• Mr. Thomas Smothers
• Mr. and Mrs. Frank T. Speed, Jr.
- Mr. C. W. and Mrs. Thelma Hensley
• Steve and Connie Bowman
- Mr. Floyd Hinshaw
• Ms. Betty Harris
- Ms. Jami Moser Hinson
• Mr. and Mrs. James D. Moser, Jr.
- Ms. Margaret Hooper
• Dr. Roslyn Crisp
• Ms. Suellyn Dalton
• Ms. Susan Dalton
• Reid and Cathy Dusenberry
• Dr. Martha Keels
• Ms. Carolyn Rhode
• Dr. John B. Wolverton, Jr.
- Mr. Ralph Ingle
• Mrs. Patricia Oakes
- Robert and Maggie Johnson
• Ms. Darsell Hadley
- Mr. Tal Johnson
• Mrs. Jeannie Johnson Watkins
- Ms. Tara Kahane Kanady
• Ms. Sherri Elliott
• Ms. Natalie Miles
- Officer Francis Kemprowski
• Drs. Susan and Richard Letvak
- Chef Marvin Kimber
• Robert and Carole Bailey
• Percy and Dorothy Baynes
• Ms. Rubetta Carr
• Mr. Jay Christmas
• Ms. Suellyn Dalton
• Ms. Susan Dalton
• Mr. Reginald Davis
• Ms. Debra Dixon-Doss
• Gil and Becky Dodson
• Ms. Anita Ellis
• Ms. Tonya Gerald Goins
• Ms. Audra Grice
• Ms. Brenda Hampton
• Ms. Nancy Hinshaw
• Sam and Lynn Hobgood
• Mr. Kevin Jayes
• Ms. Barbara Kimber
• Mr. Jack O'Kelley Sertoma Club
• Ms. Lisa Liggins-Pulliam
• Reggie and Marjorie Lipscomb
• Colleen and Tom Macklin
• Mr. Ian Macklin
• Ms. Colleen Mills and Mr. Matt
Williams
• Dr. Sandi Moulton
• Ms. Beverly S. Pugh
• Ms. Carolyn Rhode
• Mr. Carlyle Schomberg
• David and Regina Schomberg
• David and Margaret Schultz
• Mr. Trevor Slosek
• Mr. Seraphim Smith

- Dr. John B. Wolverton, Jr.
- Ms. Ruth Kivett
 - Ms. Suellyn Dalton
 - Dr. John B. Wolverton, Jr.
- Ms. Dorothy A. Lee
 - Ms. Denise Lloyd-Forbes
- Mr. Harry LeGette
 - Dr. Helen LeGette
- Mr. Wilbert S. Lloyd
 - Ms. Denise Lloyd-Forbes
- Mr. Vidal Martinez-Rodriguez
 - Ms. Laura Nisbett
- Ms. Charlotte Mays
 - Ms. Suellyn Dalton
- Dr. and Mrs. W. Ronald McCarter
 - Sandra and Bill Leach
 - Ms. Darlynn McCarter
- Mr. Eugene James McDonald, Jr.
 - Ms. Mary McDonald
 - Mr. Terry McNamara
 - Mrs. Marjorie McNamara
- Mr. Harvey Mitchell
 - Civitan Club of Burlington
- Kevin and Maria Moore
 - Hawfields Civitan Club
 - Dr. Martin H. Nadelman
- Mrs. Alice O. Smith Morrow
 - Mr. Robert G. Morrow, Jr.
- Mr. Jan-Erik Nordh
 - Mrs. Britt Nordh
- Mr. Glenn Oakes
 - Mrs. Patricia Oakes
- Mr. Jack O'Kelley
 - Jack O'Kelley Sertoma Club
- Mr. W. Michael Pace
 - Alamance County Extension Master Gardener Volunteers
 - Mr. Simon R. Brigman, Sr.
 - Mr. and Mrs. Craig D. Cohen
 - Mr. Troy W. Millikan
 - Ms. Brenda K. Pace
- Mrs. Wanda Palmer
 - Ms. Suellyn Dalton
 - Gil and Becky Dodson
 - Dr. Sandi Moulton
 - Dr. John B. Wolverton, Jr.
- Mr. E. Glenn Pendergraph
 - Mrs. Bettie C. Pendergraph
- Mr. Thomas E. Powell, Jr.
 - Carolina Biological Supply Company
 - Dr. and Mrs. James B. Powell
- Ms. Janice Reaves
 - Ms. Suellyn Dalton
 - Ms. Debra Dixon-Doss
 - Gil and Becky Dodson
 - Dr. Marla Dunham
 - Mrs. Annabelle Hawkins
 - Ms. Jennifer L. Jones
 - Ms. Debra McCusker
 - Dr. Sandi Moulton
 - Ms. Barbara Small
 - Dr. John B. Wolverton, Jr.
- Mr. Steven Reinhartsen
 - ACC Student Government Association
 - Ms. Jennifer Brownell
 - Carolina Supply, Inc.
 - Jackie and Steve Cole
 - Ms. Mary Davis
 - Dr. Carol S. Disque
 - Geico Insurance – The Peskoe Agency
 - Willie Saul and Son Plumbing
 - Sports Endeavors, Inc.
 - Drs. Michael and Eleanor Stoller
 - Jackie and Scott Tanseer
 - Dr. John B. Wolverton, Jr.
- Mr. Robert B. Rhode
 - Mr. and Mrs. Peter S. Rhode
- Ms. Donna Rice
 - Ms. Jennifer Brownell
 - Ms. Kelly Elder
 - Ms. Sarah Folckomer
 - Mr. and Mrs. Henry R. Heath, Jr.
 - Ms. Sonya McCook
 - Mr. Barney D. Rice
 - Mr. Wallace M. Shearin
 - Mr. Douglas C. Smith
- Ms. Toni Roberson
 - Ms. Maia Johnson Holmes
 - Ms. Lisa Lloyd
- Richard A. and Vera Robertson
 - Mrs. Patricia Oakes
- Mrs. Scarlett Robertson
 - Mrs. Patricia Oakes
- Mr. Alan H. Saunders
 - Dr. Sandy Moulton
- Ms. Doris Schomberg
 - Robert and Carole Bailey
 - Percy and Dorothy Baynes
 - Ms. Rubetta Carr
 - Chef Jay Christmas
 - Ms. Suellyn Dalton
 - Ms. Susan Dalton
 - Mr. Reginald Davis
 - Ms. Debra Dixon-Doss
 - Gil and Becky Dodson
 - Ms. Anita Ellis
 - Ms. Tonya Gerald Goins
 - Ms. Audra Grice
 - Ms. Brenda Hampton
 - Ms. Nancy Hinshaw
 - Sam and Lynn Hobgood
 - Mr. Kevin Jayes
 - Ms. Barbara Kimber
 - Ms. Lisa Liggins-Pulliam
 - Reggie and Marjorie Lipscomb
 - Colleen and Tom Macklin
 - Mr. Ian Macklin
 - Ms. Colleen Mills and Mr. Matt Williams
 - Dr. Sandi Moulton
 - Ms. Beverly S. Pugh
 - Ms. Carolyn Rhode
 - Carlyle and Katie Schomberg
 - David and Regina Schomberg
 - David and Marg Schultz
 - Mr. Trevor L. Slosek
 - Mr. Seraphim Smith
 - Dr. John B. Wolverton, Jr.
- Mrs. Kathryn Linthicum Schultz
 - Mr. Gilbert Umberger
- Ms. Ann Scott
 - Ms. Angie Brummitt
 - Ms. Carolyn Burrus
 - Ms. Amy Cowen
 - Ms. Ann Cowen
 - Ms. Cheryl Foster
 - Ms. Julie Foster
 - Mr. and Mrs. Robert M. Gasparello
 - Ms. Pam Ellis Hall
 - Ms. Risa Hanau
 - Mr. and Mrs. John M. Jordan
 - Ms. Sherry Leonard
 - Ms. Deborah McPherson
 - Ms. Judy Morris
 - Ms. Jane Pendergraph
 - Pittman & Steele, PLLC
 - Ms. Lisa Price
 - Mr. and Mrs. John Reardon
 - Ms. Susan Schut
 - Ms. Kay Stutes
 - Mr. and Mrs. Mark D. Walters
 - Mr. and Mrs. Joseph L. Wood
- Ms. Mary E. Scott
 - Carolyn Rhode
- Governor and Mrs. Robert W. Scott
 - Mr. Fred G. Morrison
 - Dr. Neill McLeod
- Mr. David Lee Sharpe
 - Mr. Philip Smith
- Ms. Deborah Shearin
 - Ms. Ellen J. Brown
 - Emily and Ashley Brown
 - First Reformed United Church of Christ Evening Circle
 - Dr. Sandra B. Greene
 - Mike and Bonita Hooper
 - Ms. Barbara S. Howard
 - Dr. and Mrs. Terry McNeill
 - Mr. Bently C. Pagura
 - Mr. Wallace M. Shearin
 - Ms. Linda G. Smith
 - Mr. and Mrs. C. Thomas Steele, Jr.
- Mrs. Margaret Silaghi
 - Richard and Carolyn Franks
 - Mrs. Patricia Oakes
- Mr. Thant Sin
 - Dr. Janie Benson
- Ms. Jean Slaughter
 - The Rev. Amy S. Myers, Ph.D.
- Charlie and Esther Stadler
 - Marty and Pam Stadler
- Mr. Charles Stanley
 - Dr. John B. Wolverton, Jr.
- Ms. Linda Stevens
 - Ms. Judith Driscoll
- Ms. BL Stewart
 - Mrs. K. Anne Gant
 - Mrs. Rose Anne Gant
 - Ms. Catherine M. McCormick
 - Dr. and Mrs. Albert R. Styrcula
- Mr. Ralph Stockard
 - Mr. Ronald Franck
- Dr. William E. Taylor
 - Jane and Ken Jarvis
- Ms. Patsy Tingen
 - Ms. Ann Snell
- Ms. Kristie Tomaro
 - Mr. Brian Arnold
 - Mr. Jay Mayer
 - Barb and Jon Young
- Ms. Marilyn Trussell
 - Ms. Barbara Christy
 - Ms. Jennifer Icenhour
 - Ms. Jennifer Mock
- Ms. Kasey Vaughans-Ward
 - The ACC Nursing Club
 - D&K Soil Consultants
 - Ms. Sherri Elliott
 - Ms. Darlene Listopad
 - Ms. Kimberly Mahaffey
 - Ms. Shylon Smith
 - Mr. Matthew Tackitt
 - Dr. Ramesh Upadhyaya
 - Mr. David Ward
 - Michael and Christina Welch
- Ms. Jalvia Vaughn
 - Ms. Jeannie H. Proctor
- Mr. Ashton Vieau
 - Ms. Emma Beckham
 - Ms. Pamela Buff
 - Mr. Terry Foushee
 - McClure Funeral Service
- Mr. Jerry Walker
 - C.N. Wilson Enterprises
- Mrs. Sue Jones Warren
 - Dr. John B. Wolverton, Jr.
- Mr. John Weathers
 - Dr. Janie Benson
- Mr. Joe Wheeler
 - Michael and Mary Ellen Cross
- Mr. Troy W. Woodard, Sr.
 - Mr. and Mrs. Robert C. Davis, Jr.
 - Dr. and Mrs. D. Reid Woodard
 - Mr. and Mrs. Todd G. Woodard
 - Mr. and Mrs. Troy W. Woodard, Jr.
- Mrs. Elizabeth (Betty) Wooten

- Pete and Beth Glidewell
- Carolyn Rhode

Chief Michael S. Woznick
 • Ms. Agnes K. Coughlin
 • Mr. David Prevatte
 • Mr. and Mrs. Jeffrey Reynolds

This list represents gifts received by the ACC Foundation between July 1, 2024 and June 30, 2025. Pledges paid after June 30, 2025 will be included in the 2025-2026 Annual Report. Every attempt has been made to ensure accuracy.

Please direct questions or comments to Carolyn Rhode at 336.506.4128.

Made In honor

Gifts made in honor of/by:

Ms. Susan Abernethy
 • Ms. Susan E. Holt

ACC Foundation Staff
 • Mr. Jack Overacre, Jr.

Lynda Aleshire
 • Friends in the Burlington Woman's Club, Inc.

Mr. Brian Bailey
 • The Bailey Family
 • Blue Ribbon Diner and The Village Grill
 • Cathy and Christopher Ely
 • Mr. and Mrs. Douglas Graves, Sr.
 • Ms. Kathy Kay
 • Ms. Gwendolyn Bailey Musser
 • Howard and Martha Tate
 • Mr. Todd Wanless

Leonard and Carole Barnard
 • Ms. Betty Roberts

Ms. Peggy Boswell
 • One anonymous donor
 • Mr. Christopher N. Ackiss
 • Ms. Marie Scott Amon
 • Erwin and Nancy Fuller Family
 • Senator Amy Scott Gale and Mr. Fred Gale
 • Hawfields Presbyterian Church
 • Steve and Martha Madden
 • C.W. and Julie Mayo
 • Mr. Fred G. Morrison, Jr.
 • Ms. Carolyn Rhode
 • Charles and Sandy Scott
 • Mrs. Connie T. Scott
 • Edwin and Joy Scott
 • Ms. Jan Scott
 • John and Ashley Scott
 • Mr. and Mrs. William C. Scott, Sr.
 • Dr. Louis and Susan Scott Sutton
 • Mr. Larry Vellani
 • Carolyn and Mike White
 • Ms. Betsy Scott Winborne

Mrs. Helen Brennan
 • Dr. Michael Brennan

Mr. Simon R. Brigman, Jr.
 • Ms. Brenda K. Pace

Ms. Emma Rose Brown
 • Mrs. Patricia Oake

Mr. Ryland Brown
 • Custom Floral Creations

Ms. Tricia O. Brown
 • Mrs. Patricia Oakes

Ms. Jason Burrows
 • Mrs. Patricia Oakes

Ms. Louisa Butler
 • Ms. Nancy J. Butler

Mr. and Mrs. Craig Cohen
 • Mrs. Brenda K. Pace

Ms. Susan Dalton
 • Anonymous

Mr. Thomas R. Davis
 • Mr. and Mrs. Samuel P. Jones

Dr. Carol Disque
 • Ms. Sonya McCook

Dr. Marla H. Dunham
 • Mr. Aaron D. Dunham
 • Rev. Robert E. Dunham
 • Marrianna and Jim Putnam
 • Ms. Leah D. Singleton

Ms. Julie Scott Emmons
 • Mr. and Mrs. David M. Scott

Ms. Sarah Folckomer
 • Burlington Woman's Club, Inc.

Ms. Brenda Fowler
 • Ms. Judith Driscoll

Mr. Justin Fowler
 • Mr. Nicholas Goble

Ms. Carolyn Franks
 • Mrs. Patricia Oakes

Dr. Algie C. Gatewood
 • One anonymous donor
 • Mr. Pete Glidewell

Brett and Tonja Guthrie
 • Mrs. Patricia Oakes

Mr. Ron Hall
 • Mr. Craig Andrews
 • Assistant Chief Christopher Gaddis
 • Ms. Traci Holt

Mr. Chester Honeycutt
 • Living Landscapes, Inc.

Ms. Hilda Jernigan
 • Burlington Woman's Club, Inc.

Mr. Alex Johnson
 • Mrs. Patricia Oakes

Ms. Anna Johnson
 • Mrs. Patricia Oakes

Ms. Cathy Johnson
 • Anna and Bob Johnson
 • Hon. Robert F. Johnson
 • Shelly and Tyler Johnson
 • Ms. Sonya McCook
 • Mr. Wallace M. Shearin
 • Ms. Sherri A. Singer

Ms. Stephanie Johnson
 • Mrs. Patricia Oakes

Ms. Mary F. Kendall
 • RE/MAX Diamond Realty

Ms. Mary Etta King
 • Burlington Woman's Club, Inc.

Ms. Martha Krall
 • Bob and Terri Kirchin

Mrs. Pat Long
 • Mr. Jesse Long and Family

Dr. Thomas Lucier
 • Ms. Michelle Sabaoun
 • Dr. and Mrs. W. Lee Williams
 • Mr. and Mrs. William H. Woodruff

Ms. Sonya McCook
 • Anonymous

Ms. Natalie Miles
 • Anonymous
 • Ms. Kelli Harrell
 • Ms. Maria Redding

Ms. Madilee Mitchem
 • Mrs. Mary Beth Morgan

Mr. John Neathery
 • Rev. and Mrs. J. Marshall Neathery

Ms. Angela Oertel
 • Burlington Woman's Club, Inc.

Ms. Denane Owen
 • Friends of the Burlington Woman's Club, Inc.

Ms. Brenda Pace
 • Mr. Simon Brigman
 • Craig and Lauren Cohen
 • Mr. Troy Millikan

Ms. Kathy Pike
 • Burlington Woman's Club, Inc.

Dr. Scott Queen
 • Anonymous

Ms. Abby Redding
 • Ms. Maria Redding

Mr. Gabriel Redding
 • Ms. Maria Redding

Mr. Frank Rhodes
 • Ms. Elizabeth Solazzo

Mr. Dickie Robertson
 • Mrs. Patricia Oakes

Ms. Sandra J. Russell
 • Mrs. Patricia Oakes

Dr. Charles K. Scott
 • Mr. Frank Longest
 • Andy and Laura Scott

Doug and Nancy Shoffner
 • Mrs. Patricia Oakes

Robert and Wendy Silaghi
 • Mrs. Patricia Oakes

Leah and Prentiss Singleton
 • Marrianna and James Osolin-Putnam

Ms. Shelley Smith
 • Ms. Jennifer Smith

Mr. Justin Snyder
 • Haley and Caleb Fox
 • Mr. Jerry Hackney
 • Mr. Josh Strickland

Ms. Alma Thompson
 • Ms. Susan E. Holt

Ms. Vivian Umberger
 • Mr. Gilbert Umberger II

Dr. Clara Vega
 • Ms. Beth Brehler
 • Mr. Eduardo Calle
 • Mr. Juan Pablo Calle Vega
 • Ms. Autumn Frandock
 • Dr. Janyth Fredrickson
 • Mr. Gabriel Gonzalez and Ms. Paulina Chavez
 • Dr. Cristy Holmes
 • Ms. Cathy Johnson
 • Ms. Sonya McCook
 • Ms. Maria Mosquera
 • Ms. Patricia Reyes-Meyer
 • Dr. Fernando Suarez
 • Gloria and Andres Suarez
 • Mr. Gabriel Suarez-Vega
 • Ms. Mariana Suarez Vega
 • Ms. Beatriz Vega T.
 • Mr. Manuel Trujillo
 • Ms. Ana Vega
 • Ms. Ines Vega
 • Mr. Jack Vega
 • Mr. José Gabriel Vega Valencia

Chef Todd Wanless
 • The Bailey Family
 • Blue Ribbon Diner and The Village Grill
 • Cathy and Christopher Ely
 • Mr. and Mrs. Douglas Graves, Sr.

- Ms. Kathy Kay
- Ms. Gwendolyn Bailey Musser
- Howard and Martha Tate

Ms. Debo Wells
• Mrs. Patricia Oakes

Ms. Elaine Williams
• Burlington Woman's Club, Inc.

Dr. W. Lee Williams
• Ms. Michelle Sabaoun
• Mr. William H. Woodruff

Dr. Ben Wolverton
• Ms. Linda McAdams

Mr. William H. Woodruff
• Ms. Michelle Sabaoun
• Dr. and Mrs. W. Lee Williams

Ms. Jade Yarbrough
• Ms. Susan Turner

Mr. Jon Young
• Ms. Barb Young

This list represents gifts received by the ACC Foundation between July 1, 2024 and June 30, 2025. Pledges paid after June 30, 2025 will be included in the 2025-2026 Annual Report. Every attempt has been made to ensure accuracy.

Please direct questions or comments to Carolyn Rhode at 336.506.4128.

Titan Society

Members of the Titan Society are those who have indicated in writing that they have included ACC in their estate plan. Current members as of October 2025

**Susan Abernethy and
Dennis Rasmussen**

Margie H. Alston

**Leonard and Carole
Barnard**

**John and Ann
Bellingham**

Pete and Patty Blaetz

**Wayne and Deborah
Bowery**

Tom and Faye Conally

Mary Davis Reinhartsen

Elisabeth Deyton

**Dr. Marla H. Dunham and
Rev Robert E. Dunham**

**Reid and Cathy
Dusenberry**

Dick and Linda Fisher

**Bill and Martine
Gomory**

**Doug and Laura
Hargrove**

**Marion and Bobbie
Hargrove**

Brad Harmon

**Charles H. and Sylvia
S. Harris**

**Jo Ann Atkins
Hensley**

Cathy Johnson

Lorena Ledford

**David and Cathy
Moore**

**Dr. Martin H.
Nadelman**

**Jack and Judy
Overacre**

Carolyn Rhode

**Mary and Johnny
Schronce**

**Charles and Sandra
Scott**

Ron Sturgill

**Andree and John
Woosley**

Endowed Funds

ACC Foundation Endowed Funds as of
June 30, 2025

\$1,000,000 and above

Cone Health Chair
J.C. and Fran S. Dillingham Memorial Scholarship
Labcorp Endowed Chair
Scott Family Collection Endowment

\$500,000-\$999,999

Cone Health Scholarship
Samuel Moses Thornton Memorial Scholarship
Carroll Shoffner Partners at Work Fund

\$250,000-\$499,999

Sondra Hall Jones Endowed Scholarship
Labcorp Scholarship
Audrey K. McBane Nursing Scholarship
Jack R. Overacre, Jr. Scholarship
Thomas E. Powell, Jr. Endowment

\$100,000-\$249,999

Alumni Loyalty Scholarship
Margaret Connors Asher Memorial Scholarship
Carolina Biological Supply Company Scholarship
Chandler Endowed Fund
Founders' Endowment
Shake and Eleanor Harris Memorial Scholarship
Elizabeth Hayden-Harman Scholarship
Margaret Hooper Dental Assisting Scholarship
The William R. Hupman Scholars Endowment
Jake King Memorial Automotive Scholarship
Charlie Lowry Culinary Fund
A.H. and Evelyn Guthrie Patterson Memorial Scholarship
Amick H. and Mattie S. Patterson Memorial Scholarship
James Patterson Jr. Memorial Scholarship
Elwood Prater Scholarship
Steven Reinhartsen Memorial Scholarship
Al and Candace Rey Scholarship
H. Joseph Schoeneck Culinary Memorial Endowed Fund
The Ralph H. and Hazeleene Scott Family Collection Fund
Shallowford Community Scholarship
Deborah Shearin Educational Scholarship
A.O. Smith Scholarship
The Charlie and Esther Stadler Endowment
Twin Lakes Community Scholarship
The Wells Fargo Foundation Endowed Fund for Student Aid
Wooten Family Scholarship

\$50,000-\$99,999

Alamance-Caswell Medical Society and Alliance Scholarship
Ambassador Endowment
Bank of America Partners at Work Endowment

Kevin Bilson Memorial Scholarship
Helen Brennan Honorary Scholarship
The Margaret H. Brown Endowed Fund
Sandy Brownstein Memorial Criminal Justice Scholarship
Ivan Burger Memorial Welding Scholarship
Burlington Honda Partners at Work Fund
Burlington Industries Partners at Work Endowment
Byrd Family Partners at Work Fund
Capital Bank Partners at Work Fund
First State Savings Bank Partners at Work Fund
C.P. William Fisher and Jean Northrup Fisher Memorial Scholarship
Glen Raven Partners at Work Fund
The Robert J. Graham Scholarship
Sylvia S. Harris Horticulture Fund
Samuel and Margaret Holton Memorial Scholarship
Huffman Oil Company, Inc. Partners at Work Fund
Cathy Johnson Scholarship
Jack R. and Dorothy C. Lindley Endowed Fund
Eleanor D. and C. Vincent Long, Jr. Scholarship
Walter A.G. Maschke Memorial Scholarship
W. Michael Pace Memorial Horticulture Scholarship
Pro Feet Inc. Partners at Work Fund
Alma T. and Jerilyn M. Robinson Memorial Scholarship
Doris Schomberg and Marvin Kimber Culinary Scholarship
Henderson and Hilda Scott Endowed Fund
Thant Sin and John W. Weathers Memorial Endowment
Jean Slaughter Memorial University Transfer Scholarship
Smith Family Foundation Partners at Work Fund
Linda Stevens and Brenda Fowler Accounting Scholarship
B.L. Stewart Culinary Scholarship
Dorothy Lyn Thompson Scholarship

\$25,000-\$49,999

Walter H. Williams High School Class of 1962 Scholarship
Wishart, Norris, Henninger & Pittman, P.A. Endowed Fund
Troy W. Woodard, Sr. Scholarship
Kevin Bilson Memorial Scholarship
Dr. and Mrs. Paul Abernethy Scholarship
Vardy and Clara Abernethy Memorial Scholarship
ACC Retirees Scholarship
Alamance-Caswell Builders Association Scholarship
Alley, Williams, Carmen and King Scholarship
The Leonard and Carole Barnard Endowment
Beach Family Scholarship
Opaleene Beamer Endowed Scholarship
Dr. George Walker Blair, Jr. and Sara Jo Barnett Blair Memorial Nursing Scholarship
Peggy Boswell Scholarship
Burlington Woman's Club Scholarship
Vic Chisholm Memorial HVAC Scholarship
Congregations Linking and Supporting Schools (CLASS) Endowed Scholarship
Margaret Cooper and Jill Troutman Scholarship
Dixon-Doss Community Service Scholarship
Marla Dunham Endowed Scholarship
Ellis-Hall Scholarship

George Floyd Memorial Scholarship
 Mark A. and Annie F. Foriest College Scholarship Fund
 Larry Fuquay Scholarship
 Gatewood Family Scholarship
 J. Nimrod Harris, Sr. Memorial Scholarship
 Larry Hughes Hawkins Scholarship
 James M. and Osie Duncan Jones Scholarship
 Sarah Elizabeth Sykes Jones Memorial Scholarship
 Winfred Lee Jones, Sr. Scholarship
 John Ketcham Endowed Scholarship
 Jack R. and Dorothy C. Lindley Business Administration
 Scholarship
 Dr. W. Ronald McCarter Employee Excellence Awards Endowed
 Fund
 Dr. W. Ronald & Peggy Holt McCarter Scholarship
 Janet Jones Miles Memorial Scholarship
 Kevin and Maria Moore Endowed Scholarship Fund
 The F. W. (Sam) Morgan Fund
 Jack O'Kelley Memorial Sertoma Club Scholarship
 E. Glenn and Bettie C. Pendergraph Honorary Scholarship
 Donna Rice Scholarship for Office Administration
 Riddle and Company Partners at Work Advertising and Graphic
 Design Scholarship
 John Russell Honorary Mechatronics Scholarship
 Paul V. Scheetz Scholarship
 E. Faye Simpson Memorial Nursing Scholarship
 John Sims and Holly Deyo Sims Endowed Scholarship
 Snyder Horticulture Student Travel Fund
 Stephenson Family Scholarship
 Patricia B. Tingen Alumni Scholarship for Business Students
 Truist Endowed Fund
 Ashton Vieau Memorial Scholarship
 Rosella Rodgers Wilson Tech Prep Scholarship
 Youths' Friends Association Scholarship

\$10,000-\$24,999

Nancy J. Adams Culinary Scholarship
 Alamance County Committee on Civic Affairs Founders'
 Scholarship
 Chef Brian Bailey and Chef Todd Wanless Culinary Scholarship
 Jennings M. Bryan, Jr. Memorial Scholarship
 Chief Don Bulla Fire Academy
 Vernon Cheek Accounting Scholarship
 Tom R. Davis Endowment
 James M. Galbraith Memorial Scholarship
 Louise Heckman Memorial Nursing Scholarship
 Norman and Bertha G. Herbin Scholarship
 Eda and Ralph Holt Endowed Fund
 J. Robert Holt Memorial Scholarship
 Linda Humble River Mill Scholarship
 Maurice Jennings Scholarship
 John W. and "Pete" Jones Memorial Scholarship
 Tara Kahanek Kanady First Responder Scholarship
 George Kimmel Memorial Scholarship

Martin Luther King, Jr. Memorial Scholarship
 Pat Long Student Support Endowed Scholarship
 Leonard and Jane Miller Memorial Visual Arts Scholarship
 Everett G. Mogle Memorial Scholarship
 Alice O. Smith Morrow Scholarship
 Janice Reaves and Otha Hawkins PTK Scholarship
 Myron A. and Sarah H. Rhyne Scholarship
 Saturday Morning Breakfast Club Horticulture Scholarship
 Arthur Neal Scott Family Endowment
 Karen Wolverton Smell Memorial Scholarship
 Rudy Smith Memorial Scholarship
 Renee Snyder Clover Garden Scholarship
 Dr. William E. Taylor Scholarship
 Thompson Family Scholarship
 Triangle Home Health Care, Inc. Scholarship
 Kasey Vaughans-Ward Scholarship
 Dr. Clara Vega Scholarship

Under \$10,000

Roy Blackwell Memorial Scholarship
 Graham Lions Club Scholarship
 William B. "Chip" Wood, Jr. Business Administration Scholarship



Foundation Scholarships

Access to Achievement Scholarships
 Alamance County Beekeepers Scholarship
 Alamance County Human Resources Association Scholarship
 Alamance Region Antique Car Club Scholarship
 Buddy Aldridge Welding Scholarship
 American Legion Post #427 Scholarship
 Anonymous Scholarship
 Auxiliary of the American Legion Post #427 Scholarship
 LP and Evelyn Best Memorial Scholarship
 Biotechnology Instructors Scholarship
 Betty Y. Bowman and C.W. Hensley Memorial Scholarship
 Brayton Family Charitable Foundation Scholarship
 Lucianna Cassesse Memorial Scholarship
 Cone Scholarships for Health Sciences
 Homer Corn Memorial Teaching Scholarship
 Cox Toyota-Scion Scholarship
 Cecil Crabbe Memorial HVAC Scholarship
 JC and Fran Dillingham Scholarships
 Dog Grooming Scholarship
 Duke Energy Scholarship
 ETA Chapter - Alpha Delta Kappa Scholarship
 The Garden Club of The Triad Scholarship
 Wallace Gee and Harvey Mitchell Scholarship
 'Steen and Gary Gorby Scholarship
 Graham Rotary Academic Scholarship
 Austin Guthrie Esthetics Memorial Scholarship
 Gene Haas Scholarship for Machining
 Ron Hall Criminal Justice Scholarship
 Dr. John E. Harwood, Jr. Scholarship
 Hillsborough Garden Club Scholarship
 Jami Moser Hinson Memorial Scholarship
 Tal Johnson Memorial Scholarship
 Mary F. Kendall RE/MAX Scholarship
 LabCorp Scholarship Fund
 Herbert Z. Lund Fund
 McCandless Scholarships
 Mebane Business Association Scholarship
 Modern Automotive Scholarship Fund
 NC Community College Instructor of the Year Scholarship
 Thelma Parker Scholarship
 Piedmont Electrical Membership Corporation Scholarship
 Elwood Prater Memorial Scholarship
 Promise Program Scholarships

"The Chief" Robert B. Rhode Scholarship
 Lydia Ricks Student Scholarship
 Brenda Chriscoe Ritter Memorial Scholarship
 Toni Roberson Memorial Scholarship
 L. J. Rogers Trucking Scholarship
 Rotary Club of Alamance Scholarship
 Sandvik Coromant Scholarships
 Willie Saul & Son Plumbing Scholarship
 Ann Scott Memorial Early Childhood Scholarship
 SECU Bridge to Career Cohort Scholarship
 Twin Lakes – Health & Public Services Programs Scholarship
 Jalvia Vaughn and Merline Ellison Scholarship



(Left) One of ACC's scholarship winners at the annual Esperanza Festival.
(Right) Dr. Ken Ingle, ACC President

2024-2025

Year In Review





Alamance Community College is accredited by the Southern Association of Colleges and Schools Commission on Colleges (SACSCOC) to award associate degrees. Degree granting institutions also may offer credentials such as certificates and diplomas at approved degree levels. Questions about the accreditation of Alamance Community College may be directed in writing to the Southern Association of Colleges and Schools Commission on Colleges at 1866 Southern Lane, Decatur, GA 30033-4097, by calling (404) 679-4500, or by using information available on SACSCOC's website (www.sacscoc.org).